

## Conference Planners

Shirley Acevedo, Pre-Trial Release Officer, Osceola County  
Community Corrections

Johnny L. Alderman, Deputy Chief Juvenile ICPD,  
Florida Department of Juvenile Justice

Michael Barlet, Training and Professional Standards Manager,  
Osceola County Community Corrections

Juanita Beason, Probation Unit Supervisor, Orange County  
Community Corrections

Cleveland Bell, Executive Director, Riverside House, Miami

Jane Browning, Executive Director, International Community  
Corrections Association (ICCA)

Allison Chapman, Pre-Trial Release Coordinator, Osceola County  
Community Corrections

Donald Evans, President, C.T.I., Toronto, Ontario

Larry Fehr, Treasurer, ICCA; Pioneer Human Services, Seattle

Derek K. Gallagher, Chief of Probation, Seminole County  
Probation Department

John Gannon, Ph.D., Executive Director, International Association  
for Correctional and Forensic Psychology

Tiffany Griggs, Senior Case Manager, Osceola County  
Community Corrections

Lonn Lanza Kaduce, Ph.D., Professor, University of Florida

Marita Malone, Ph.D., Chair, Saint Louis University's School for  
Professional Studies Criminal Justice Organization

M. David McGriff, Ph.D., CEO, Advocate Program, Miami

John McMahon, Divisional Director, The Salvation Army, Tampa

Tadar Muhammad, Program Manager, Homebuilders Institute

Jane O'Shaughnessy, President, ICCA; Cornerstone Programs,  
Denver

Joyce Peach, Assistant Chief, Osceola County Community  
Corrections

Don Pittman, Probation Administrative Supervisor,  
Orange County Community Corrections

Roberto Hugh Potter, Ph.D., Professor, University of  
Central Florida

Gladys Scott, Regional Vice President, Dismas Charities, Atlanta

Awet Sellers, Office Manager, International Community  
Corrections Association

Maddy Wright, Senior Community Corrections Officers,  
Orange County Community Corrections

## Table of Contents

Welcome letter from the ICCA President, Kevin Downey, Ph.D. ....	3
Welcome letter from the ICCA Executive Director, Jane Browning .....	5
Welcome letter from the Secretary of the Florida Department of Corrections, Walter A. McNeil .....	6
Welcome letter from the Secretary of the Florida Department of Juvenile Justice, Frank Peterman, Jr. ....	7
Welcome letter from the Orange County, Florida, Mayor, Richard T. Crotty .....	8
Co-Sponsors .....	9
Exhibitors .....	9
ICCA Conference Chair, Steven F. Chapman, Ph.D. ....	10
ICCA Conference Co-Chairs, M. David McGriff and Don Pittman .....	10
ICCA 2008 Award Winners .....	11
Hotel Floor Plan .....	12
Conference Schedule .....	13
Pre-Conference Workshops .....	14
Monday Schedule .....	15
Monday Workshops .....	16
Tuesday Schedule .....	18
Tuesday Workshops .....	19
Wednesday Schedule .....	22
Wednesday Workshops .....	23
ICCA Conference Speakers .....	24
Local Facility Tours .....	32

**Assessments.com**

Online Testing • Action Plans • Outcome Report

## Today's Smartest Approach to Implementing Evidence-Based Practices in Corrections, Probation and Parole

Rehabilitate Offenders • Increase Public Safety • Reduce Recidivism • Save Time • Save Money

### 8 Guiding Principles of Evidence-Based Practice

- Assess Actuarial Risk/Needs
- Enhance Intrinsic Motivation
- Target Interventions
- Skill Training with Directed Practice
- Increase Positive Reinforcement
- Engage On-Going Support in Local Communities
- Measure Relevant Processes and Practices
- Provide Measurement Feedback

Assessments.com is the nation's leading innovator in implementing evidence-based practices (EBP), and we are proud to be partnering with many of you to bring the newest and smartest technology, tools, training and best practices to criminal justice today.

As keynote speaker for the 2009 Texas Corrections Association Conference, Assessments.com CEO Sean Hosman was chosen to present the latest research on what's working right now to reduce recidivism, rehabilitate offenders, increase public safety, and save time and money for criminal justice agencies all across the country.

You are already doing good work. The times, however, are demanding a change in the way we all do business. Assessments.com can help you and your stakeholders become more effective and efficient.

For more information, please visit [www.Assessments.com](http://www.Assessments.com) or call us at 877-277-3778

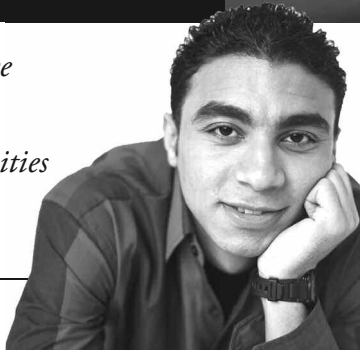


## Through Every Transition...

*The Change Companies® has an Interactive Journaling® program to help your clients successfully reintegrate with their communities*



**The Change Companies®**



- Substance abuse treatment
- Criminal justice
- Managing co-occurring disorders
- Impaired driving
- Relapse prevention
- Health improvement

[www.changecompanies.net](http://www.changecompanies.net) • (888) 889-8866

# Welcome



September 13, 2009

Dear Colleagues:

I am pleased and honored to be welcoming you to the beautiful destination city of Orlando and the 17th Annual ICCA Research Conference: “What Works in Community Corrections: Transitions”. This year’s conference will be focused on the issues, challenges and opportunities faced by our citizens returning home from incarceration. Reintegration and restoration of citizenship can only be achieved when all of the stakeholders learn the evidence-based practices related to accountability, rehabilitation and public safety and understand their respective roles in the process. Among the issues addressed in this conference are mental illness and addiction treatment, transitional housing, job creation and employment placement, and correctional education for juveniles and adults.

As key stakeholders, the scholars, practitioners, advocates and returning citizens who are with us in Orlando will find this conference to be a forum in which they can come together to enhance their knowledge as well as the sense of shared engagement and responsibility necessary to ensure a more efficient, effective and meaningful system of community corrections. During your time here, you will also find there is ample opportunity to interact with your fellow conference participants informally between sessions about application of what you have learned, how to meet local challenges, and how to take advantage of potential opportunities and partnerships.

When you are not busy learning or networking, Orlando has much to offer for those who need to re-charge their batteries. Orlando is known for its theme parks, restaurants, golf courses and cultural events. I hope that your time here is memorable for both the quality of the conference as well as the enjoyment derived from local attractions.

On behalf of the Board of Directors, I want to offer my sincere appreciation to the ICCA staff and our Executive Director Jane Browning who has once again demonstrated her organizational skills and vision in putting together this important event. I want to offer a special thanks to Don Pittman, our local committee host, who has worked tirelessly to make this conference a success. Finally, I am so grateful to our presenters, panelists and sponsors without whom this conference would not be possible.

Learn, laugh and enjoy.

*Kevin Downey*  
President, ICCA

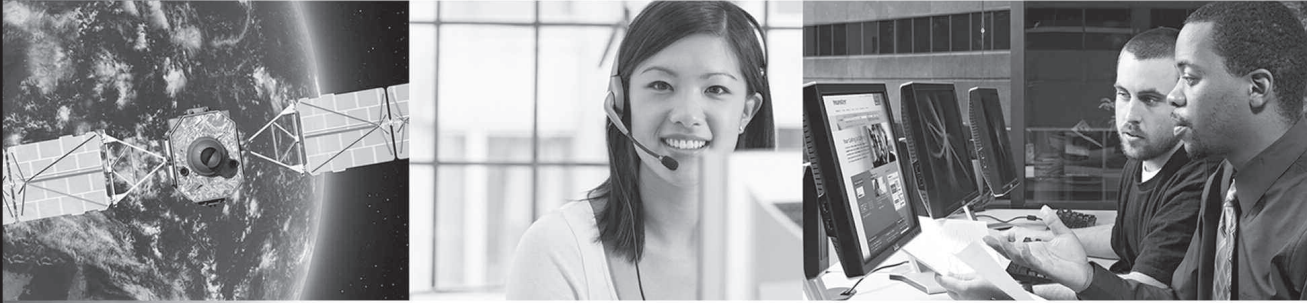


**International Community Corrections Association**

8701 Georgia Avenue, Suite 402 • Silver Spring, Maryland 20910

PHONE 301-585-6090 • FAX 301-585-6094 • E-MAIL [info@iccaweb.org](mailto:info@iccaweb.org) • WEB [iccaweb.org](http://iccaweb.org)

## BI Incorporated Provides Government with Proven Technology & Treatment Solutions



### A Full Continuum of Offender Monitoring & Supervision Options

- Reentry & Cognitive Behavioral Treatment Programs
- Active & Passive GPS Tracking
- Alcohol Monitoring
- Radio Frequency
- Voice Verification

BI offers cost-effective alternatives to incarceration and is a leader for community-based treatment services, reentry programs, supervision services, and offender monitoring technology for offenders on parole, probation or pretrial release.

For more information on BI products and services, visit the BI booth.

[www.bi.com](http://www.bi.com) • 800.701.5171



## INTERNATIONAL COMMUNITY CORRECTIONS ASSOCIATION

### New Headquarters!

*Please note our new address and contact information...*

ICCA  
8701 Georgia Avenue  
Suite 402  
Silver Spring, Maryland 20910

Phone: 301-585-6090

Fax: 301-585-6094

Email: [info@iccaweb.org](mailto:info@iccaweb.org)

Web: [www.iccaweb.org](http://www.iccaweb.org)

# Welcome



Dear Colleagues:

All of us at ICCA are truly excited about this year's conference program. You are in for a terrific experience, and we are so glad you could make the trip! A special welcome to those who have made very long journeys to get here, from Korea and Scotland, Australia and Nigeria, Hawaii and Alaska.

The very most scintillating stars of the corrections field are with us here in Orlando, presenting key speeches, research papers and discussions, and loads of fascinating research and practice-based workshops. ICCA is grateful to all of these industry leaders for sharing their expertise with the field, and especially to those traveling from New Zealand and The Netherlands to do so! Special thanks to the National Institute on Corrections and to the National Institute for Justice for supporting several of our research plenaries, and to the National Institute on Drug Abuse for organizing and sponsoring an extraordinary three-part workshop on co-occurring disorders.

Dr. Steven Chapman, Assistant Secretary for Research at the California Department of Corrections and Rehabilitation, served as the ICCA 2009 Research Conference Chair, recruiting many of the key speakers to this conference. Dr. M. David McGriff, CEO of the Advocate Program, Inc., in Miami and Don Pittman, Chief Probation Supervisor for the Orange County Corrections Department in Orlando, Florida, are the Co-Chairs of the 2009 Conference. What a job these outstanding individuals have done! Don Pittman is your local host and his hard-working committee has overseen every logistical detail to make your experience here a great one.

Thanks to Tadar Muhammad of Homebuilders Institute for managing the local facilities tours, giving you the option of visiting one of Florida's most outstanding institutions and programs. My special thanks to John McMahon of The Salvation Army, and President of the Florida Association of Community Corrections, for guiding me through the halls of Florida State Government.

A great conference does not occur without great sponsors: thanks to our Exhibit Hall vendors for joining us, and thanks to the many and varied financial supporters of this event. Please relay your thanks to our exhibitors and to all those folks wearing "sponsor" badges!

If this is your first or 100th visit to Orlando, I know you will discover many forms of enjoyable entertainment, from Disney World's amazing rides to great restaurants to fireworks over Epcot Center. It really feels to me like this is the perfect conference in the perfect location, and I guarantee that the volunteers who are working on this conference to assist you are among community corrections most dedicated professionals.

This is what ICCA is all about: bringing together all the very best people. And that means you!

Sincerely,

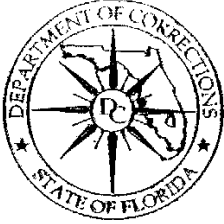
*Jane Browning*  
Executive Director



**International Community Corrections Association**

8701 Georgia Avenue, Suite 402 • Silver Spring, Maryland 20910

PHONE 301-585-6090 • FAX 301-585-6094 • E-MAIL [info@iccaweb.org](mailto:info@iccaweb.org) • WEB [iccaweb.org](http://iccaweb.org)



**FLORIDA  
DEPARTMENT of  
CORRECTIONS**

*An Equal Opportunity Employer*

2601 Blair Stone Road • Tallahassee, FL 32399-2500  
Phone: (850) 488-7480

Governor  
**CHARLIE CRIST**

Secretary  
**WALTER A. McNEIL**

<http://www.dc.state.fl.us>  
Fax: (850) 922-2848

September 13, 2009

Dear Community Corrections Professionals:

As Secretary of the Florida Department of Corrections, and on behalf of the tremendous staff of our department, I am honored to take this opportunity to welcome you to the 17<sup>th</sup> Annual Research Conference of the International Community Corrections Association. We extend our best wishes for a conference experience that will reinvigorate your energy and renew your passion.

ICCA has a history of providing premier training events, drawing on a wealth of inter-agency partnerships that produce excellent quality, research-based information. ICCA once again has launched an ambitious agenda for this conference event.

The theme of the conference is "Transitions." ICCA has lined up a stellar program that includes opportunities for you to meet and learn from some of the most renowned and respected professionals on timely topics that are critical to our field. It is truly an honor to assist ICCA by hosting what I am sure will be a dynamic and worthwhile conference experience for you.

Once again, I want to welcome you and extend my sincere wishes for you to have a memorable experience as you take this opportunity provided by ICCA to gain a broader understanding of the complex issues that currently and continually face community corrections.

Sincerely,

Walter A. McNeil  
Secretary

# Welcome

Letter from Frank Peterman  
Department of Juvenile Justice



RICHARD T. CROTTY  
MAYOR

ORANGE COUNTY  
**OFFICE OF THE MAYOR**

TELEPHONE 407-836-7370 FAX 407-836-7360  
201 SOUTH ROSALIND AVENUE, P.O. BOX 1393, ORLANDO, FL 32801  
mayor@ocfl.net

September 13, 2009

International Community Corrections Association  
17<sup>th</sup> Annual Research Conference  
Orlando, Florida

Greetings:

It gives me great pleasure to welcome you to Central Florida and the International Community Corrections Association's (ICCA) 17th Annual Research Conference, "Transitions." I am proud that our Orange County Corrections Department and others in our community have provided support and assistance in planning for the conference.

I know that ICCA has a history of presenting excellent training conferences that provide information on the latest research and trends in the field of community corrections. I am aware that there will be attendees at this conference from throughout the United States as well as Canada, Australia and Europe. This conference will also certainly provide excellent networking and collaboration opportunities for its attendees.

It is truly an honor to assist ICCA in presenting this conference. I am excited that you have chosen Orlando for this event and I hope that the conference is a very positive experience for you. I assure you that we will provide one of the best settings possible for ICCA.

While you are here, I hope that you have a chance to enjoy our wonderful weather and our world-famous attractions. We are known for hospitality and as a very popular tourist destination for people from all over the world. Thank you for being here and I am confident that you will enjoy your stay.

Sincerely,

A handwritten signature in black ink, appearing to read "Richard T. Crotty".

Richard T. Crotty  
Orange County Mayor

## CONFERENCE CO-SPONSORS

ICCA thanks the following groups and organizations for their generous cash donations which have contributed so much to the success of the 2009 ICCA Conference in Orlando.

**Advocate Program, Inc.**  
Miami, Florida

**ATTIC Correctional Services**  
Madison, Wisconsin

**BI, Inc.**  
Boulder, Colorado

**Community Resources for Justice**  
Boston, Massachusetts

**Cornerstone Programs**  
Denver, Colorado

**International Association for Correctional and Forensic Psychology**  
San Luis Obispo, California

**Leaders in Community Alternatives**  
San Francisco, California

**New Beginnings Treatment Center**  
Tucson, Arizona

**Pioneer Human Services**  
Seattle, Washington

**Teletrust, Inc.**  
Sherman, Texas

## CONFERENCE EXHIBITORS

**Assessments.com** .....Booth #13  
Online testing, action plans, outcome reports

**BI, Inc.** .....Booth #15  
EM Equipment & Reentry Services

**The Change Companies** .....Booth #8  
Offender Change Curriculum

**Correctional Counseling, Inc.** .....Booth #12  
Cognitive Behavioral Training Materials

**Essential Learning, LLC** .....Booth #6

**Florida State University** .....Booth #9  
College of Criminology and Criminal Justice

**International Community Corrections Association (ICCA)** .....Booth #3  
Books, journals, and membership

**Judicial Correction Services, Inc.** .....Booth #7  
Misdemeanor Probation Supervision

**MCJ, Inc.** .....Booth #19  
Eye check non-invasive drug testing

**MedCom Product Solutions, Inc.** .....Booth #5  
Drug Abuse Devices

**Norix Group, Inc.** .....Booth #10  
Correctional and Institutional Furniture

**Northpointe Institute for Public Management, Inc.** ..Booth #25  
Risk Needs & Assessment Software and Services

**Orbis Partners, Inc.** .....Booth #14  
Assessment, Training & Consulting

**SAGE Publications** .....Booth #11  
Academic Journals

**SAMHSA** .....Booth #20  
Substance Abuse and Mental Health Services Administration

**SecurManage** .....Booth #17  
Automated resident movement and case management

**Teletrust, Inc.** .....Booth #4  
Pay Telephones/Inmate Telephones

**University of Phoenix** .....Booth #

## ICCA RESEARCH CONFERENCE CHAIR



### Steven Chapman

Steven F. Chapman, Ph.D. is the Assistant Secretary for the Office of Research in the California Department of Corrections and Rehabilitation. In addition to production of management reports, program evaluations, and research on program effectiveness, his office is involved in analysis of high-

profile correctional issues including population reduction, parole reform, health care reform, and reform of the juvenile justice system. His office led the development of an actuarial risk tool constructed and normed on California inmates, which has been applied in institutional programming as well as structured decision-making tools for parole. He has also been involved in the design and development of an evidence-based correctional rehabilitation system in adult institutions. He is currently working

with the California Administrative Office of the Courts on a pilot project applying risk/needs assessments at sentencing of probationers. Steve also serves on the National Institute of Justice Community Corrections Research Network.

Prior to moving to California in 2006, he served as the Director of the Planning and Technical Assistance Bureau of the Florida Department of Juvenile Justice (FDJJ), and Coordinator of the FDJJ Evidence-Based Practices Initiative, which launched an evidence-based treatment and case management system into the continuum of juvenile justice services in Florida.

Steve earned his Ph.D. in Child and Family Development at the University of Georgia. His writing has appeared in the *Journal of Divorce and Remarriage*, the *Journal of Family Relations*, *Cultural Variations in American Fatherhood*, *Housing and Society*, and in more than 35 Florida Juvenile Justice evaluations and reports on policy issues.

## ICCA 2009 CONFERENCE CO-CHAIRS

### M. David McGriff

M. David McGriff is the Chief Executive Officer of the Advocate Program, Inc. Dr. McGriff was awarded a Ph.D. in Criminal Justice from the University of Miami in 1985. He also has a Masters degree in Correctional Management. His association with the Advocate Program and the field of Community Corrections dates back to 1973. He previously served as Criminal Justice Administrator for the Eleventh Judicial Circuit, in charge of all Criminal, Juvenile, and Traffic Court operations. He has been Chief Executive Officer of the Advocate Program since 1987. Dr. McGriff has been a member of the Board of Directors of the American Probation and Parole Association (APPA) since June of 2002, and is Past President of the Florida Association of Community Corrections (FACC). The Advocate Program has been instrumental in many areas of offender treatment and in the establishment of the Dade County Domestic Violence Court. In September of 2003, Dr. McGriff established and became Chairman of the Board of Victim Response, Inc. (VRI), the Advocate Program's partner corporation and victim services arm. VRI now operates the Lodge, Miami-Dade County's first privately run Domestic Violence and Sexual Assault Women's Shelter.

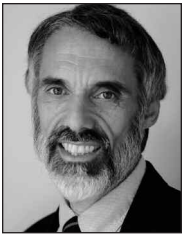


### Don Pittman

Don Pittman is the Chief Probation Supervisor for the Orange County Corrections Department in Orlando, Florida. He has held this position for almost 20 years. Don has been President of the Florida Association of Community Corrections and he is an active member of many community

agency boards in Central Florida. Don has over 30 years of experience in management, program planning, implementation and monitoring. The Orange County Probation Unit was the first in the United States to be accredited by the American Correctional Association.

## ICCA 2009 AWARD WINNERS



### **MARC MAUER** 2009 MARGARET MEAD AWARD

The ICCA Margaret Mead Award recognizes an individual who has demonstrated leadership in the field of community corrections through guidance, innovative ideas, influence of policy and/or dedicated service to the ideals and goals of community-based correctional programming. This award is considered to be the highest honor presented by the Association.

Marc Mauer has authored highly influential works on justice issues, most notably *The Race to Incarcerate* which first brought public attention to America's high rates of incarceration. He has testified before the U.S. Congress on racial disparity, voting rights, collateral consequences, juvenile justice reform and more. He is an internationally recognized policy leader. Mauer's recent academic book chapter and journal articles include: "The Hidden Problem of Time Served in Prison;" "Racial Impact Statements as a Means of Reducing Unwanted Disparities;" "Race, Class and the Development of Criminal Justice Policy;" and "Reducing Incarceration to Expand Opportunity."

Marc is the Executive Director of The Sentencing Project, which was founded in 1986 to provide defense lawyers with sentencing advocacy training and to reduce the reliance on incarceration. Since that time, The Sentencing Project has become a leader in the effort to bring national attention to disturbing trends and inequities in the criminal justice system with a successful formula that includes the publication of groundbreaking research, aggressive media campaigns and strategic advocacy for policy reform. The Sentencing Project is dedicated to changing the way Americans think about crime and punishment.



### **LORRAINE ROBINSON** 2009 J. BRYAN RILEY MERITORIOUS SERVICE AWARD

The J. Bryan Riley Award recognizes an individual whose work exemplifies the ideals of ICCA and who has delivered outstanding service to community corrections.

Lorraine Robinson has served as the Executive Director of Ka Hale Ho'āla Hou No Nā Wāhine in Honolulu since 1995, helping over 1,300 women in pursuit of the program's mission of *empowering women to successfully transition from prison to the community*. The program has received national recognition as a model for gender responsive programming for female offenders transitioning from prison to the community. Their 68% success rate is in keeping with the best outcome numbers nationally. Lorraine's dynamic and energetic leadership, and her compassion, belief in the dignity and worth of human beings, respect for individual difference and a commitment to quality care for clients are all part of the framework for her leadership in the reentry field.



### **JUDGE STEVEN LEIFMAN** 2009 JUDICIAL AWARD

The ICCA Judicial Award is presented to an active or retired judiciary practitioner who promotes and furthers the cause of community corrections through active support and leadership in community correctional programming.

Judge Leifman was responsible for creating the Eleventh Judicial Circuit Criminal Mental Health Project. This highly successful program diverts non-violent misdemeanor defendants with mental illnesses to appropriate mental health facilities and provides Crisis Intervention Team training for law enforcement agencies in Miami-Dade County. The program has substantially reduced recidivism, saved critical funds and has saved lives. In recognition of this program, the Project was awarded the 2001 Council of State Governments Innovations Award and a million dollar SAMSHA Jail Diversion Expansion Grant.



### **RICK BILLAK** 2009 ARTHUR MCDONALD LEADERSHIP AND SERVICE AWARD

The Art McDonald Leadership and Service Award is given in recognition of an individual who has demonstrated a commitment to community-based corrections and who utilizes the ICCA Association as a vehicle to support their goals.

Richard J. Billak, CEO of Community Corrections Association of Youngstown, is recognized for his pioneering work in the field of community correction, representing the very best of those who tirelessly strive to bring offenders back home successfully. The groundwork Billak has laid in Ohio has been an inspiration to community corrections professionals on an international scale. Rick Billak served as President of ICCA from 1997-1999. The Art McDonald Award was presented to Mr. Billak in Cleveland in June, 2009, at the ICCA Regional Conference on Mental Health and Criminal Justice: "Best Practices in Community Reintegration."

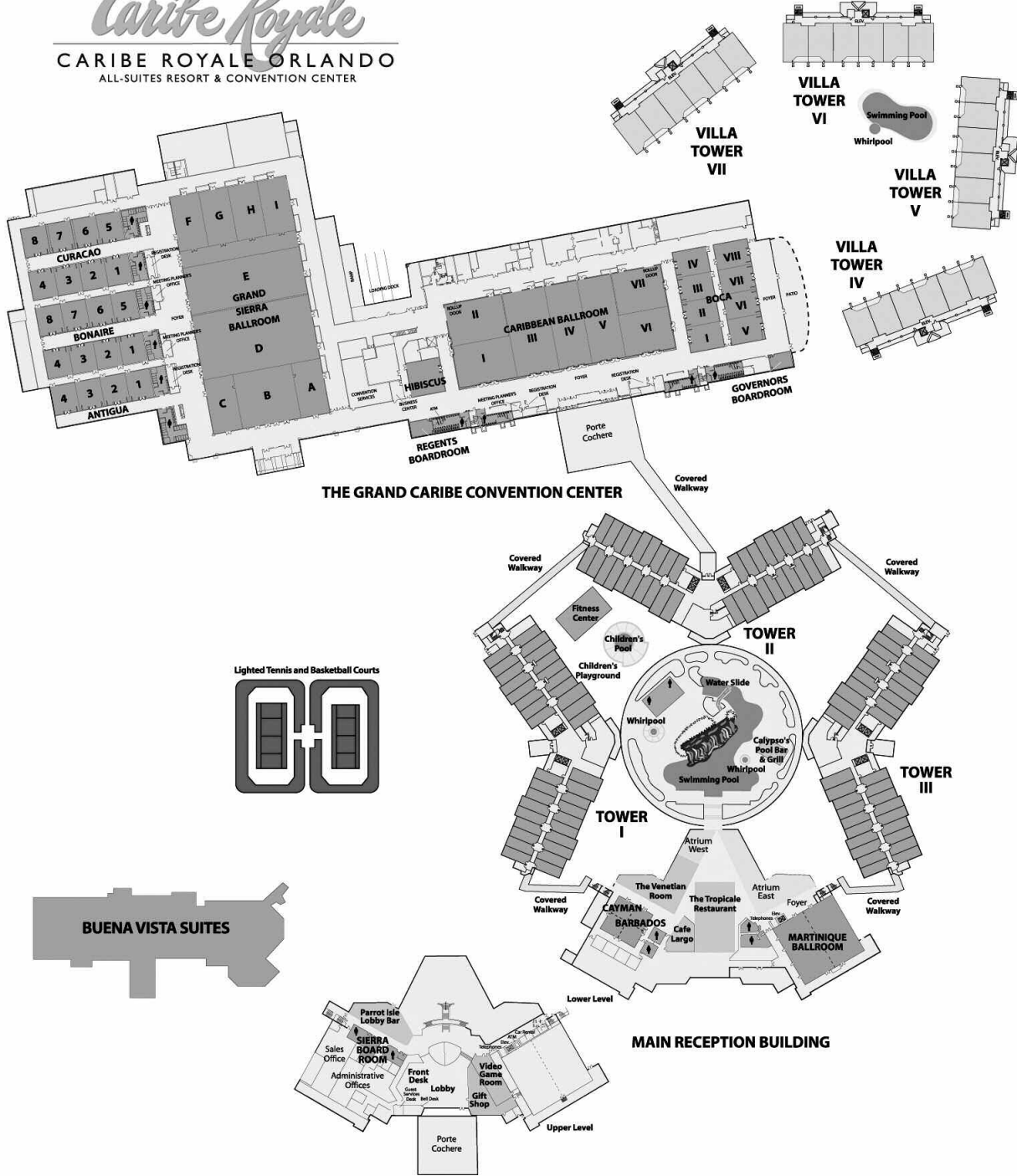


### **TELETRUST, INC.** CHARLIE FLOWERS CORPORATE PARTNERSHIP AWARD

ICCA's Charlie Flowers Award is newly created this year in memory of our beloved friend, who exemplified the highest principles of corporate responsibility and integrity and came to be sincerely loved by many of those in the field of community corrections. The award will be made from time to time in recognition of an individual or organization which has demonstrated a strong spirit of support for and collaboration with ICCA as exemplified by the friendship and personal involvement of Charlie Flowers, who was Vice President of Teletrust, Inc. This first year of the award, ICCA honors Teletrust, Inc.

# Floor Plan

*Caribe Royale*  
**CARIBE ROYALE ORLANDO**  
 ALL-SUITES RESORT & CONVENTION CENTER



# Conference Schedule

## ICCA “Transitions” – September 13–16, 2009

All events are in the Caribe Royale Conference Center

### SUNDAY, SEPTEMBER 13, 2009

8:00 a.m. – 10:00 a.m.	Pre-Conference Registration Only	Caribbean Foyer
8:00 a.m. – 9:00 a.m.	Coffee Service	Caribbean Foyer
9:00 a.m. – 12:00 p.m.	Half Day Pre-Conference Workshop	Boca I
9:00 a.m. – 5:00 p.m.	Full Day Pre-Conference Workshops	Boca II, III & IV
9:00 a.m. – 12:00 p.m.	ICCA Committee Meetings	Boca V & VI
12:00 p.m. – 5:00 p.m.	ICCA Board Meeting	Boca V & VI
5:00 p.m. – 7:00 p.m.	Welcome Reception	Poolside
5:00 p.m. – 9:00 p.m.	Exhibit Set Up	Caribbean I & I

### MONDAY, SEPTEMBER 14, 2009

7:00 a.m. – 9:00 a.m.	Exhibit Set Up	Caribbean I & II
7:00 a.m. – 5:00 p.m.	Registration	Caribbean Foyer
8:00 a.m. – 9:00 a.m.	Opening Ceremony	Caribbean IV & V
9:00 a.m. – 9:30 a.m.	Exhibit Hall Opening/Breakfast	Caribbean I & II
9:30 a.m. – 11:00 a.m.	First Research Plenary Session	Caribbean IV & V
11:00 a.m. – 11:15 a.m.	Water Break	Boca Foyer
11:15 a.m. – 12:45 p.m.	Workshop Session One	Boca I - VII
1:00 p.m. – 2:00 p.m.	Edwin I. Megargee Honorary Lecture	Caribbean III
2:15 p.m. – 3:45 p.m.	Second Research Plenary Session	Caribbean IV & V
4:00 p.m. – 5:30 p.m.	Workshop Session Two	Boca I - VII
5:45 p.m. – 7:15 p.m.	Exhibit Hall Reception	Caribbean I & II

### TUESDAY, SEPTEMBER 15, 2009

7:00 a.m. – 5:00 p.m.	Registration	Caribbean Foyer
7:30 a.m. – 8:30 a.m.	Continental Breakfast	Caribbean I & II
8:30 a.m. – 10:00 a.m.	Third Research Plenary	Caribbean IV & V
10:15 a.m. – 11:45 a.m.	Workshop Session Three	Boca I - VII
12:00 p.m. – 1:30 p.m.	Margaret Mead Awards Banquet/Lecture	Caribbean III
1:30 p.m. – 3:00 p.m.	Workshop Session Four	Boca I - VII
3:00 p.m. – 5:00 p.m.	Local Facilities Tours	Conference Center Entrance
3:00 p.m. – 5:00 p.m.	Exhibit Tear Down	Caribbean I & II

### WEDNESDAY, SEPTEMBER 16, 2009

8:00 a.m. – 9:00 a.m.	Coffee Service	Caribbean Foyer
9:00 a.m. – 10:30 a.m.	Fourth Research Plenary	Caribbean IV & V
10:45 a.m. – 12:15 p.m.	Workshop Session Five	Boca I - VII
12:30 p.m. – 1:30 p.m.	Closing Luncheon	Caribbean III

Sunday, September 13, 2009 | 9:00 A.M. – 5:00 P.M.  
**PRE-CONFERENCE WORKSHOPS**

8:00 A.M. – 10:00 A.M.  
Pre-Conference Registration Only  
Caribbean Foyer  
Coffee Service

9:00 A.M. – 12:00 A.M.  
Half Day Pre-Conference Workshop  
Boca I

**Treating Co-Occurring Disorders: Patience and Persistence**

Randy Shively, Ph.D.  
Vice President – Clinical Services  
Alvis House, Columbus

The client with co-occurring disorders (mental health and substance abuse) presents a challenge for treatment providers. The Integrated Treatment model will be discussed along with effective ways to conceptualize cases and prioritize treatment areas. We will discuss needed components of treatment and some of the major obstacles encountered by treatment staff. It is important for staff to learn ways to empower clients and hold them accountable for their treatment. Staff need to be both adaptable and persistent in teaching needed skill sets to clients. It is important to train staff to effectively deal with Relapse and Crisis. Several case studies will be presented to illustrate how to individualize and prioritize treatment areas. Outcome data will be presented and used to illustrate the need for program improvements.

9:00 A.M. – 5:00 P.M.  
Full Day Pre-Conference Workshops  
Boca II–IV

**Managing Organizational Change in the Implementation of Best Practices**

Kimberly Sperber, Ph.D.  
Director of Research and Evaluation  
Talbert House, Cincinnati, OH

Correctional agencies face increasing pressure to implement evidence-based practices in an effort to reduce recidivism. This pressure has taken the form of outcomes driven contracting, increased regulatory audits, mandatory participation in Correctional Program Assessment Inventories, and attempts to mandate recidivism reduction through legislation. In meeting these demands, knowledge of “what works” alone is not sufficient to sustain long-term change in an organization. Agencies also need effective implementation planning and execution skills. Here are components of effective implementation and concrete examples of implementation strategies.

**Motivational Interviewing**

Brad Bogue  
Justice Systems Assessment and Training  
Boulder, CO

Motivational Interviewing provides effective strategies and skills for many forms of behavior change including: mental health, chemical dependency, criminal justice, homeless services, domestic violence, employee assistance programs, vocational rehabilitation and primary health care including HIV. It is a client-centered approach effective for both adult and adolescent populations. Theory, practice and skill-building.

**Structured Clinical Risk Assessment of Sex Offenders for use by Front Line Staff – the new Sexual Violence Risk – 20**

Douglas Boer, Ph.D.  
Associate Professor and Clinical Director  
University of Waikato  
Hamilton, New Zealand

The Sexual Violence Risk – 20 (1997) by Boer and colleagues required professional qualifications (i.e., the right to diagnose) to code items. The test has been revised to allow front line staff with bachelor-level degrees or criminal justice diplomas to use it by redesigning the diagnostic items. Reasons for the revision included: harmonization of risk assessment and offender management information and communication amongst all criminal justice staff, and to improve public safety.

Monday, September 14, 2009  
**MONDAY SCHEDULE**

**Registration**

7:00 A.M. – 5:00 P.M.

**OPENING CEREMONY**

8:00 – 9:00 A.M.

*Caribbean IV & V*

**Greetings from the ICCA President**

Dr. Kevin Downey

**Greetings from the Orange County Corrections Department**

Michael A. Tidwell, Chief

**Greetings from the Osceola County Corrections Department**

Gregory Futch, Chief

**Presentation of the Colors**

Color Guards of Orange and Osceola Counties

**National Anthems of the United States and Canada**

Ms. Kim Sweeting

**Welcome from the Florida Department of Corrections**

Secretary Walter McNeil

**Welcome from the Florida Department of Juvenile Justice**

Secretary Frank Peterman, Jr.

**KEYNOTE ADDRESS**

Introduction by Dr. M. David McGriff, 2009 Conference Chair



Dr. Todd Clear

**“Imprisoning Communities: How Mass Incarceration Makes Disadvantaged Neighborhoods Worse”** – Dr. Todd Clear, Distinguished Professor of Criminal Justice at John Jay College of Criminal Justice of the City University of New York

**EXHIBIT HALL GRAND OPENING**

9:00 A.M. – 9:30 A.M.

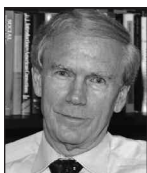
*Caribbean I & II*

*Floridian Continental Breakfast in the Exhibit Hall*

**FIRST RESEARCH PLENARY SESSION**

9:30 A.M. – 11:00 A.M.

*Caribbean IV & V*



Dr. Tom Blomberg

**Introductions**

Jane Browning, Executive Director, ICCA

**“Adolescent Correctional Education and Crime Desistance”** – Dr. Tom Blomberg, Dean and Sheldon L. Messinger Professor of Criminology, College of Criminology and Criminal Justice, Florida State University

**Response**

Dr. Karol Lucken, Associate Professor in the Department of Criminal Justice and Legal Studies at the University of Central Florida

**WORKSHOP SESSION I**

11:15 A.M. – 12:45 P.M.

*Boca I – VII*

**LUNCHEON BANQUET**

1:00 P.M. – 2:00 P.M.

*Caribbean III*

*Sponsored by the International Association for Correctional and Forensic Psychology*

**Second Annual Edwin I. Megargee Honorary Lecture**

**Introduction**

Dr. John Gannon, Executive Director, International Association for Correctional and Forensic Psychology



Dr. Randy Otto

**“Developmental Psychology and Its Relevance to Understanding Kids in the Juvenile Justice System”** – Dr. Randy Otto, Randy Otto is an Associate Professor in the Department of Mental Health Law and Policy at the University of South Florida

**SECOND RESEARCH PLENARY SESSION**

2:15 P.M. – 3:45 P.M.

*Caribbean IV & V*

*Sponsored by the National Institute on Corrections*

**Introductions**

Dr. Patricia Van Voorhis, ICCA Board member; Professor, University of Cincinnati



Dr. Faye Taxman

**“Transformations: From Systems to Individuals”** – Dr. Faye Taxman, Professor, Administration of Justice Department, George Mason University

**Response**

Carol Shapiro, Founder and President, Family Justice

**WORKSHOP SESSION II**

4:00 P.M. – 5:30 P.M.

*Boca I – VII*

**RECEPTION IN THE EXHIBIT HALL**

5:45 P.M. – 7:15 P.M.

*Caribbean I & II*

*Sponsored by BI, Inc., Orbis Partners, Inc., SecurManage, & Teletrust, Inc.*

**Master of Ceremonies**

Phil Nunes, ICCA Development Committee Chair

## MONDAY WORKSHOPS

### SESSION ONE

11:15 A.M. – 12:45 P.M.

#### I.1 *Boca I*

**Kip Lowe, Ph.D.**, Vice President for Training, The Change Companies, Carson City, Nevada

**From Assessment to Community Supervision** (*Track A: Assessment*)

This workshop will improve participants' knowledge in developing focused, targeted, individualized case plans for community supervision of offenders. The workshop will incorporate evidence-based principles of effective correctional intervention into a structure that translates assessment data into a workable, accountable case plan. The workshop will also discuss how to effectively engage the offender into a cooperative case plan—one that the offender contributes to and understands.

#### I.2 *Boca II*

**Nancy LaVigne, Ph.D.**, Senior Research Associate, The Urban Institute, Washington, D.C.

**Families and Reentry: Capitalizing on the Often Untapped Role of Family in Successful Reentry** (*Track B: Families*)

This workshop will present findings from the Urban Institute's "Returning Home" study, with a specific focus on the role that family members can play in facilitating the successful reintegration of family members. Perspectives of both returning prisoners and family members will be presented, followed by a group discussion about specific changes to community supervision policies and practices that can enhance the role of family in prisoner reentry efforts.

#### I.3 *Boca III*

**A. Steven Lanza**, Executive Director, Family Reentry, Bridgeport, CT and **Derrick Gordon, Ph.D.**, Director of Research, Policy and Program on Male Development, The Consultation Center/Yale University, New Haven, CT

**Bridging and Connecting Prerelease & Post-Release: The Fresh Start Reentry Program** (*Track C: Reentry*)

This presentation describes how an iterative program evaluation model in concert with a responsive prisoner reentry program can be used to facilitate successful reentry. It describes a comprehensive model that begins in prison, bridges prison and family/community, helps to negotiate successful reentry, and build sustainable community supports. Evaluation and the academic-community partnership are critical in facilitating successful reentry. Strategies, challenges, achievements policy/advocacy efforts, and unique features are integrated throughout the presentation.

#### I.4 *Boca IV*

**Linda Connelly**, President and CEO, Leaders in Community Alternatives, San Francisco, CA and **George Drake**, National Law Enforcement and Corrections Technology Center, Denver, CO

**Making Sense out of Community Corrections Technologies** (*Track D: Management*)

Technological solutions for drug testing, surveillance, client tracking and a host of other community corrections needs proliferate, but misunderstanding abounds as to what a particular technology can do and what it cannot. An expert panel reviews the array of available technologies, discusses the pros and cons – e.g., what can GPS accomplish and what is required to make it work? – and offers guidance on matching needs with the right equipment.

#### I.5 *Boca V*

**William D. Burrell**, Corrections Management Consultant, Lawrenceville, NJ

**Transforming Parole Supervision: In Pursuit of Best Practices** (*Track E: Community Supervision*)

Recent work by the Urban Institute and its partners (NIC, BJA and the JEHT Foundation) has begun to address the state of practice in parole supervision. This work includes three major initiatives: Putting Public Safety First, a document of best practices for parole supervision, a report on parole practices nationwide and the Parole Best Practices Academy. These three initiatives will be presented and the direction, challenges and potential for transforming parole supervision will be explored.

#### I.6 *Boca VI*

**Jennifer Rechichi**, Administrator of the Programming & Technical Assistance Unit, Office of Program Accountability, Florida Department of Juvenile Justice

**PACT: Uniform Assessments for Juveniles in Residential Programs and in the Community** (*Track F: Juvenile Justice*)

#### I.7 *Boca VII*

**Craig Cooper**, Director of Operations, Illinois TASC

**Medication Assisted Treatment** (*Track G: Treatment*)

Advances in the field of neuroscience of addiction and technology have opened the door to new possibilities in the treatment and supervision of addicted offenders. Recent research has led to new developments in treatment approaches and the inclusion of medication to assist the process of recovery. What are the barriers and solutions for implementing medication assisted treatment in the criminal justice system? What are current trends in opiate addiction and prescription abuse? A continuum of opportunities will be discussed.

## MONDAY WORKSHOPS

### SESSION TWO

4:00 P.M. – 5:30 P.M.

#### 2.1 Boca I

**Leonard Sipes**, Senior Public Affairs Specialist, Court Services and Offender Supervision Agency (CSOSA), Washington, D.C.

#### **Using Social Media to Accomplish Agency Goals—the DC Fugitive Safe Surrender Program** (*Track D: Management*)

This workshop will provide an overview of social media for government agencies to achieve strategic goals. The presentation will seek to demystify the process of social media and to reinforce the fact that anyone, especially those without a technical background, can create audio and video podcasts. The DC Fugitive Safe Surrender Program will serve as a case study in the use of social media to achieve agency goals.

#### 2.2 Boca II

**Nancy LaVigne, Ph.D.**, Senior Research Associate, The Urban Institute, Washington, D.C.

#### **Mapping Prisoner Reentry: Understanding the Community Context and Resources for Successful Reintegration** (*Track C: Reentry*)

An overview of the ways in which mapping the locations of released prisoners, probationers, and parolees, as well as the addresses of community services for this population, can support successful supervision and reintegration initiatives. Drawing from the Reentry Mapping Network, a group of 15 jurisdictions engaged in the mapping and analysis of reentry data, attendees will learn about what data, software, and resources are needed to use mapping effectively.

#### 2.3 Boca III

**Pamela K. Lattimore, Ph.D.**, Principal Scientist, RTI International, Research Triangle, NC

#### **Results from the Serious and Violent Offender Reentry Initiative Multi-site Evaluation** (*Track C: Reentry*)

This presentation describes findings from the evaluation of 12 adult and 4 juvenile SVORI programs. The findings suggest individuals in SVORI programs released between 7/2004 and 11/2005 were significantly more likely to receive assessments, reentry planning, and services—particularly prerelease—and to show modest improvements in housing, employment, substance use, and self-report criminal activity outcomes. The findings are encouraging with respect to the potential to build on the development work.

#### 2.4 Boca IV

**Randy Shively, Ph.D.**, Vice President for Clinical Services, Alvis House, Columbus, OH

#### **Enhancing Meaningful Interaction with Offenders** (*Track D: Management*)

The workshop goal is to examine barriers that prevent successful interactions between offenders and corrections staff. These

barriers come in many forms: often, staff response to the offender determines how meaningful the interaction. These barriers can be mitigated by the staff's beliefs and attitudes about offenders, staff looking for teachable moments, staff establishing professional boundaries, and staff empowering offenders. Staff understanding themselves better and seeing the need to improve often spells success.

#### 2.5 Boca V

**Pam Denmark**, Deputy Assistant Secretary of Re-Entry; **David Ensley**, Chief of Research and Data Analysis; and **Richard W. Pearce**, Program Manager; Florida Department of Corrections

#### **Data and Outcomes: Long-Term Evaluative Study of Probation Treatment Program** (*Tracks E: Community Supervision, and G: Treatment*)

The Florida Department of Corrections has collected data on their prison and community programs for offenders for almost 20 years. During this workshop the data will be reviewed in 'plain language', and participants will be provided an overview of what has been learned! Program success rates, recidivism rates, and cost avoidance will be discussed, and compared with national research.

#### 2.6 Boca VI

**Bas Vogelvang, Ph.D.**, Avans University, Amsterdam, The Netherlands

#### **The New Perspectives Reentry Program** (*Track F: Juvenile Justice*)

The New Perspectives Reentry Program has successfully reduced recidivism rates amongst juveniles with repeated and serious offenses, aged 16 to 23, by adjusting crime-related skills, thinking patterns and behaviour within the juvenile's own context, working on a cognitive learning-theoretical basis. New Perspectives invests much in motivating the juvenile and achieving an intensive working relationship with both the juvenile and important individuals in his social network. The Program is a unique blend of both a training and social reintegration program, combining what-works principles with principles derived from the currently emerging desistance research.

#### 2.7 Boca VII

**Kimberly Sperber, Ph.D.**, Chief Research Officer, Talbert House, Cincinnati, OH and **Douglas Boer, Ph.D.**, University of Waikato, New Zealand

#### **Violent Sex Offenders: Assessment, Management, and Politics** (*Tracks A: Assessment and C: Reentry*)

Two leading experts on the topic of sex offender management present research findings on the nature and scope of sex offending crimes and the sex offender population, and then discuss the systems of effective sex offender management. Dr. Sperber presents findings from her recent research on the outcomes of various legislated restraints on sex offenders including electronic sex offender registries.

Tuesday, September 15, 2009  
**TUESDAY SCHEDULE**

**Registration**

7:00 A.M. – 5:00 P.M.

*Caribbean Foyer*

**Continental Breakfast**

7:30 A.M. – 8:30 A.M.

*Caribbean I & II*

**THIRD RESEARCH PLENARY SESSION**

8:30 a.m. – 10:00 a.m.

*Caribbean IV & V*

*Sponsored by the National Institute on Corrections, ATTIC Correctional Services, Inc., and Community Resources for Justice*



S. Christopher Baird

**Introductions**

Donald G. Evans, Editor, *Journal of Community Corrections*

**“A Question of Evidence: A Critique of Risk Assessment Models Used in the Justice System”**

S. Christopher Baird, Executive Vice President, National Council on Crime and Delinquency, Children’s Research Center

**Responses**

Carol Shapiro, Founder and President, Family Justice  
Dr. Don Andrews, Co-Author, Level of Service Inventory

**WORKSHOP SESSION THREE**

10:15 A.M. – 11:45 A.M.

*Boca I – VII*

**MARGARET MEAD LECTURE AND BANQUET**

12:00 P.M. – 1:30 P.M.

*Caribbean III*

*Sponsored by Cornerstone Programs and Leaders in Community Alternatives*

**Introductions**

Dr. Kevin Downey, ICCA President

**Presentation of the ICCA 2009 Art MacDonald Leadership and Service Award**

Presented by Jane O’Shaughnessy, ICCA Immediate Past President

**Presentation of the ICCA 2009 Charlie Flowers Corporate Partnership Award**

Presented by Ray Weis, CEO, Dismas Charities

**Remarks by the Charlie Flowers Award Recipient**

Mrs. Charlie Flowers, for Teletrust, Inc.

**Presentation of the ICCA 2009 Margaret Mead Award to Marc Mauer**

Dr. Kevin Downey, ICCA President

**“The Changing Climate for Criminal Justice Reform”**

Marc Mauer, Executive Director, The Sentencing Project

**WORKSHOP SESSION FOUR**

1:30 P.M. – 3:00 P.M.

*Boca I – VII*

**LOCAL FACILITY TOURS**

3:00 P.M. – 5:30 P.M.

*Meet at the entrance to the Conference Center*

## TUESDAY WORKSHOPS

### SESSION THREE

10:15 A.M. – 11:45 A.M.

#### 3.1 Boca I

Tim Brennan, Ph.D., Senior Vice President and Senior Scientist, Northpointe Institute for Public Management

**Serious women offenders and their pathways into crime: Assessment, Classification and Treatment** (*Track A: Assessment*)

This workshop presents new directions in the assessment and classification of women offenders using a joint set of both gender-responsive (sexual abuse, self efficacy, parenting stress, etc) and traditional risk factors (criminal peers, anti-social personality, etc). A series of diverging pathways of women offenders have been identified and validated on a large sample of female prisoners. The diverging social and psychological processes that underlie these female patterns will be described. Their diverging theoretical interpretations will be discussed.

#### 3.2 Boca II

Lana Maloney, Area Director, Restorative Resolutions, John Howard Society of Manitoba

**Restorative Justice in Winnipeg** (*Track C: Reentry*)

Restorative Resolutions (RR) marries restorative justice principles with the "what works" literature in cases where offenders are facing over six months in jail. RR prepares detailed sentencing plans that take into account victim concerns, offender needs, and community resources. 98% of plans are accepted by the courts, with five formal evaluations showing significant reductions in recidivism; significant increases in restitution and community service work completed; and significant improvements in victim satisfaction, compared to control groups.

#### 3.3 Boca III

Dennis Torbett, Vice President for Workforce Training and Employment and John Hattery, Director of Workforce Training and Employment, Homebuilder Institute, Washington, D.C.

**Homebuilders Institute** (*Track C: Reentry*)

Home Builders Institute (HBI), an arm of the National Association of Home Builders, conducts Project TRADE, a job training and placement program focused on the employment needs of male and female ex-offenders. This session will describe in detail the unique manner in which this program prepares, and then links, students to meaningful employment in the residential construction industry, enabling successful reentry. HBI uses its Pre-Apprenticeship Certificate Training curriculum, so that TRADE graduates earn an industry-validated and recognized certificate for facilitating the reentry process.

#### 3.5 Boca V

Ralph Fretz, Ph.D., Corporate Director of Research and Forensic Assessment, Community Education Centers, Kearny, New Jersey

**Regional Assessment Centers as an Alternative to Reincarceration for High-Risk Technical Parole Violators** (*Tracks A: Assessment, and E: Community Supervision*)

Technical Parole Violators (TPV) comprise a significant percentage of the prison population. High-risk TPVs are often reincarcerated, even when a graduated sanction system has been developed, due to substance abuse relapse, absconding, or failure to complete a residential program. Regional Assessment Centers have been piloted as part of an ongoing collaboration between Community Education Centers and New Jersey State Parole to provide assessment and treatment services to the high-risk TPVs who would otherwise have been reincarcerated.

#### 3.6 Boca VI

Kip Lowe, Ph.D., Vice President for Training, The Change Companies, Carson City, Nevada

**Applying a Total Health Model to Offender Populations** (*Track G: Treatment*)

This session will allow the audience the opportunity to explore real life applications for incorporating effective health behavior change strategies, in areas such as diet, exercise, stress management and building healthy relationships, into the current curriculum offered. The presenter will draw on prevailing bodies of behavioral change research and their application to health behavior change. The practical application of the Transtheoretical Model of Behavioral Change, Motivational Interviewing, and Structured Journal Writing will be highlighted.

## TUESDAY WORKSHOPS

3.7

*Boca VII*

### Special Presentation of NIDA sponsored research on Co-Occurring Disorders

#### A. Meeting the Medical Needs of Drug-Involved Offenders *(Track G: Treatment)*

Peter D. Friedmann, MD, MPH, Alpert Medical School of Brown University, Rhode Island Hospital

The jail and prison populations are drawn from underserved communities, to which the great majority will return: the high prevalence of medical conditions in the correctional population stems from current or past risk behaviors. The constitutional right to medical care for inmates provides an opportunity to improve public health through prevention and treatment of drug abuse and overdose; infectious diseases; homicide; mental illness and suicide.

#### B. Unique Challenges in Working with Offenders who have Co-Occurring Mental and Substance Use Disorders and other Medical Conditions

Roger Peters, Ph.D., Chair and Professor, Department of Mental Health Law and Policy, University of South Florida, Tampa, FL

The prevalence of co-occurring disorders is markedly higher in justice settings than in the general population. Offenders with co-occurring disorders often cycle repeatedly through the justice and social service systems unless specialized treatment and supervision services are provided. This presentation will examine the unique challenges in working with this population. Also highlighted will be the need for specialized screening, assessment, treatment, and supervision approaches.

#### C. Recent Advances in Research and Practice for Offenders with Co-Occurring Disorders

Stanley Sacks, Ph.D., Director, Center for the Integration of Research & Practice (CIRP) at the National Development and Research Institutes (NDRI), New York

(1) constructing a screening instrument for mental disorders in criminal justice settings, and (2) designing and implementing modified TC programs in prison and aftercare settings.

(1) screening and diagnosis; (2) the relationship of co-occurring disorders to violence; (3) gender differences; and (4) the delivery of services for co-occurring disorders. The presentation continues with recommendations for a future research agenda.

## MARK YOUR CALENDARS NOW TO ATTEND FUTURE ICCA RESEARCH CONFERENCES...

**October 31–November 3, 2010**

ICCA 18th Annual Research Conference on What Works  
The Galt House, Louisville, Kentucky

**September 18–21, 2011**

ICCA 19th Annual Research Conference On What Works  
John Ascuaga's Nugget Hotel, Reno, Nevada

***Stay tuned to [www.iccaweb.org](http://www.iccaweb.org) for more information as it develops.....***

## TUESDAY WORKSHOPS

### SESSION FOUR

1:30 P.M. – 3:00 P.M.

#### 4.1 Boca I

**Sean Hosman**, CEO, Assessments.com, Bountiful, UT and **Robert Barnowski, Ph.D.**, Washington State Institute for Public Policy and **Lin Miller**, Community Corrections Program Administrator, Washington State Department of Corrections

#### **Re-Thinking the Way We Use Assessments**

*(Track A: Assessment)*

This will be theoretical, practical and research-based discussion about Washington State's new risk assessment tool and related policy/legislative decisions, including enactment a law mandating strict adherence to the "Risk Principle." There will be a demo of the tool as part of an automated, integrated software system that relies on empirical assessments results to drive supervision decisions, including eliminating community supervision for offenders who score low- or moderate-risk.

#### 4.2 Boca II

**Lorraine Robinson, MSW**, Executive Director, Ka Hale Ho'āla Hou No Nā Wāhine, Honolulu, Hawaii

#### **Beyond Best Practices: Cultivating Resilience**

*(Track C: Reentry)*

This workshop is a call to action for practitioners and administrators to become contributors to a developing body of knowledge about "what works" within the reentry field. It will urge participants to not be merely passive consumers of "best practices" but rather to be actively involved in its development. The experience of a small community based provider for women's reentry services will be used to illustrate that all of us have the capacity to contribute.

#### 4.3 Boca III

**John J. Blette, Ph.D.**, Corporate Vice President of Program Services, The Kintock Group, Wayne, Pennsylvania

#### **Facilitating the Effective Transfer of Information**

*(Track D: Management)*

This Facilitators workshop is designed to maximize your effectiveness as a trainer and facilitator by familiarizing you with facilitator best practices in group preparation, presentation skills, training approaches and group management with resistant clients. You will be Introduced you to the adult learner-based training model you may employ when delivering training/workshops particularly with resistant.

#### 4.5 Boca V

**Joanne Katz, J.D.**, Professor, Department of Criminal Justice/Legal Studies, Missouri Western State University, Kansas City, MO and **Katherine McQuay**, Policy Analyst, Partnership Development, U.S. Department of Justice, Office of Community Oriented Policing Services

#### **Effective Alternatives to Incarceration: Police Collaborations with Corrections and Communities**

*(Track E: Community Supervision)*

In these times of reexamination of the costs and outcomes of incarceration, there is renewed interest in community based alternatives for offenders. This workshop will focus on collaborations between police and other agencies when implementing partnerships, and offer ideas to enhance sustained success. Four areas will be offered as examples of police involvement in creating alternatives. They are: Mental Health Courts, Restorative Justice, Juvenile Detention Alternative Initiative and Local Initiatives such as Operation Nightlight.

#### 4.6 Boca VI

**Dennis Barrick and Stew Rowles**, Barrick Consulting Services, Point of Rocks, MD

#### **Quality Control: Improving Service Delivery and Contract Compliance** *(Track D: Management)*

Many agencies and organizations have replaced internal auditing and monitoring systems with quality control programs (QCPs). Improperly implemented, QCPs can be burdensome and ineffective. Based on experience from administering QCPs with the Federal Bureau of Prisons, the workshop will help participants identify appropriate monitoring elements, develop effective monitoring schedules, protect the QCP's integrity, revise a QCP in response staff or program performance changes, and recognize the long-term benefits of an effective QCP.

#### 4.7 Boca VII

**Beverly Harman**, Program Manager and **Pam Denmark**, Deputy Assistant Secretary of Re-Entry, Florida Department of Corrections

#### **Pilot Diversion Program in Pinellas and Pascoe Counties** *(Track E: Community Corrections)*

This is a NEW program for the Florida Department of Corrections. Realizing that resources are finite and that the cycle of recidivism and re-incarceration must be broken, the Prison Diversion program is an alternative sentencing option being piloted in two judicial circuits. In cases where the offender's current crime and past history would "score" a prison sentence, this program seeks to keep the offender in the community with outpatient and/or residential services designed to fit their specific needs.

Wednesday, September 16, 2009  
**WEDNESDAY SCHEDULE**

**Coffee Service**

8:00 A.M. – 9:00 A.M.

*Caribbean Foyer*

**FOURTH RESEARCH PLENARY SESSION**

9:00 A.M. – 10:30 A.M.

*Caribbean IV & V*

**Introductions**

M. David McGriff, Ph.D., 2009 Conference Chair

**Presentation of the 2009 J. Bryan Riley Award for Meritorious Service**

Presented by Elizabeth Curtin, ICCA Secretary



Lorraine Robinson

**Remarks by J. Bryan Riley Award Recipient**

Lorraine Robinson, Executive Director,  
Ka Hale Ho'āla Hou No Nā Wāhine



Dr. Edward Gondolf

**“Making Batterer Programs More Effective”**

Dr. Edward Gondolf, Professor of Sociology at  
Indiana University of Pennsylvania and Director of  
Research, Mid-Atlantic Addiction Research &  
Training Institute (MARTI)

**Response**

Dr. Kelley Blanchette, Director General, Women  
Offender Sector, Correctional Service Canada

**WORKSHOP SESSION FIVE**

10:45 A.M. – 12:15 P.M.

*Boca I – VI*

**CLOSING LUNCHEON**

12:30 P.M. – 1:45 P.M.

*Caribbean III*

**Introductions**

Jane Browning, Executive Director, ICCA



Steven Leifman

**Presentation of the 2009 Judicial Award**

Presented by M. David McGriff, 2009 Conference  
Chair

**Remarks by the 2009 Judicial Award Recipient**

The Honorable Steven Leifman, Eleventh Judicial  
Circuit Court, Florida

**Introduction of Luncheon Speaker**

Donald Pittman, Chief Probation Supervisor, Orange County  
Corrections Department



Barney T. Bishop, III

**“Seeking Alternatives to Incarceration”**

Barney T. Bishop, III, Executive Director and CEO,  
Affiliated Industries of Florida and  
Steering Committee Member, Coalition for Smart  
Justice

**Call to Louisville, 2010, and Adjournment**

Dr. Kevin Downey, ICCA President

## WEDNESDAY WORKSHOPS

### SESSION FIVE

10:45 A.M. – 12:15 P.M.

#### 5.1 *Boca I*

**Carissa Phelps**, Director of Strategic Accounts, The WhyTry Organization, Provo, Utah

#### **Why Try? Overcoming Poverty, Violence and Failure** (*Track F: Juvenile Justice*)

The session provides the audience with several methods to teach emotional intelligence and life skills, which will aid in transitions. This workshop emphasizes a strength-based approach to helping youth overcome their challenges using “multiple intelligence” methods emphasizing the youths’ learning styles, to teach in ways that youth will understand and remember.

#### 5.2 *Boca II*

**Ken Gosnell**, National Fatherhood Initiative, Gaithersburg, Maryland

#### **The Father Factor in Reentry** (*Track B: Families*)

Any effective approach to helping incarcerated fathers re-enter society successfully, necessarily includes interventions that promote pro-social attitudes and behaviors. Such interventions require sound skill and knowledge focused instruction along with skillful facilitation (by trained staff) that positively reinforce new learning’s and build intrinsic motivation to change. National Fatherhood Initiative programming for incarcerated fathers lays an excellent foundation for accomplishing these objectives and the ultimate goal of stronger fathers, families, and communities.

#### 5.3 *Boca III*

**Dan Eberlein**, Correctional Programs Administrator *and* **Pam Denmark**, Deputy Assistance Secretary of Re-Entry, Florida Department of Corrections

#### **“Portal of Entry:” A State/Local Partnership Re-Entry Project between the Florida Department of Corrections, and the Jacksonville Sheriff’s Office** (*Track C: Reentry*)

The Florida Department of Corrections, the Jacksonville Sheriff’s Office, and the City of Jacksonville are working together to lower the recidivism rate by utilizing strategies proven to be successful for re-entry. Florida’s Office of Re-Entry has dedicated Baker Correctional Institution as a re-entry institution for all inmates planning to return to the Duval County area, utilizing the services of the Jacksonville Re-entry Center. Released inmates register, meet probation staff, learn about community-based programs and services, and receive transition assistance.

#### 5.4 *Boca IV*

**Denise Robinson**, CEO *and* **Mark Paulus**, Vice President of Programs, Alvis House, Columbus, OH

#### **The Cutting Edge on Cutting Costs: Videoconferencing to meet Community Corrections Needs** (*Track D: Management*)

Investments in videoconferencing technologies allow Alvis House to train new staff remotely at a tremendous cost savings. These technologies allow for quick and easy team conferencing, as well as statewide prisoner reentry classes featuring expert trainers. Alvis House is pioneering one-to-one therapeutic treatment and counseling on drug addiction and mental illness through videoconferencing. Come learn how you can partake in the future of community corrections operations.

#### 5.5 *Boca V*

**Matt Moore**, BI, Inc., Fresno, CA *and* **Mary Butler**, Chief Probation Officer, Napa County Probation Department, CA

#### **Day Reporting: Transition program holds offenders accountable, targets behavior change** (*Track E: Community Supervision*)

While federal and state officials try to get their arms around the interconnected issues plaguing corrections—overcrowding, runaway costs, restricted budgets and high recidivism—Napa County officials are taking aggressive steps to enhance successful offender transitions to the community. The Napa County jail and Probation Department have partnered to create a unique program that begins behind bars and continues in the community.

#### 5.6 *Boca VI*

**Morris Copeland**, Deputy Director, *and* **Lauren Rabbito-Goldberg**, Acting Juvenile Assessment Supervisor, Clinical Unit, Miami-Dade County Juvenile Services Department

#### **Civil Citations: The Miami-Dade County Juvenile Justice Reform Model** (*Track F: Juvenile Justice*)

Representing systemic change in how juvenile justice is delivered, Miami-Dade County’s Civil Citation Initiative reforms the protocol on how police and the community address juvenile first-time misdemeanor offenders. Rather than issuing an arrest, local law enforcement agencies refer eligible children to attain the same level of evidence-based, complete, and targeted assessments and treatment services available to arrested youth, but without the stigma of an arrest, thus protecting the youth’s future.

## ICCA CONFERENCE SPEAKERS

### **Don Andrews, Ph.D.**, da\_andrews@msn.com

Don Andrews, with fellow Canadian researcher James Bonta, is the author of LSI-R:SV Level of Service Inventory Revised: Screening Version User's Manual and Interview Guide. They are also co-authors of *The Psychology of Criminal Conduct*. Dr. Andrews's research interests have been in general personality and social psychology; assessment and evaluation; theories of deviance, crime and addiction; assessment and evaluation of programs, persons and settings; gender differences; effective prevention and correctional treatment; and family, children's and youth services.

### **S. Christopher Baird**, cbaird@mw.nccd-crc.org

As Executive Vice President of the National Council on Crime and Delinquency Children's Research Center, Christopher Baird has directed the Midwest Office in Madison, Wisconsin since 1985. He has been a major contributor to the development of several risk assessment and classification programs. Many of the case management systems he has developed, especially those dealing with Child Protection Services and juvenile justice, are still in use by many states and county agencies in the United States. He has been recognized by the American probation and Parole Association and the North American Resource Center for Child Welfare.

### **Robert Barnoski, Ph.D.**, barney.wsipp@wa.gov

Dr. Barnoski holds Bachelors in Electrical Engineering from Villanova University and a Ph.D. in Psychometrics from Temple University of Philadelphia. He has over 25 years experience in the criminal justice field, serving as the Manager of Research at the Washington State Administrative Office for the Courts and then a Senior Researcher at the Washington State Institute of Public Policy, where he produced over 100 reports. His expertise includes assessment development- he developed the Washington State Juvenile Court Assessment and adult STRONG, State Risk and Offenders Needs Guide- outcome evaluation design, and multivariate statistical analyses.

### **Barney T. Bishop III**

Bishop is a native Floridian and was one of the youngest Eagle Scouts ever. In his junior year of college, he was crowned New England Debate Champion. He graduated from Emerson College with degrees in Political & Judicial Communication, and History. As a private investigator in Orlando, he owned his own detective agency. He moved to Tallahassee to work first for the State Treasurer & Insurance Commissioner, later for the Academy of Florida Trial Lawyers, and was then appointed Executive Director of the Florida Democratic Party. In 1993, he founded a public affairs and governmental consulting firm. He is currently President and CEO of Associated Industries of Florida.

### **Kelley Blanchette, Ph.D.**

Kelley.blanchette@CSC-SCC.GC.CA

Kelley Blanchette received her doctorate in forensic psychology at Carleton University. Dr. Blanchette worked first as a supervisor at the Ottawa Detoxification Centre, and began working with the Research Branch, Correctional Service of Canada, in 1993. From 2000-2007, she was Director of Women Offender Research and in 2008 was appointed as the Senior Director, Correctional Research. She has published extensively in peer-reviewed and government journals and co-authored a book entitled "The Assessment and Treatment of Women Offenders". Dr. Blanchette is an adjunct professor at Carleton University, and is currently working as Director General, Women Offender Sector at Correctional Service Canada.

### **John J. Blette, Ph.D.**, John.Blette@kintock.org

Dr. Blette has worked in the field of human services for 35 years and is currently Corporate Vice President of Program Services for The Kintock Group, an organization that provides treatment and re-entry services. He previously worked for Phoenix House of New York as the Regional Director of adult residential services, the Director of Training and Program Development for Community Education Centers and the Vice President of Clinical Services for Odyssey House. His graduate and postgraduate degrees are in administration and management as a result, Dr. Blette presents an interesting prospective on evidence based program design and implementation.

### **Thomas G. Blomberg, Ph.D.**, tblomberg@fsu.edu

Thomas Blomberg is currently Dean and Sheldon L. Messinger Professor of Florida State University's College of Criminology and Criminal Justice. He is also the Executive Director of the Center for Criminology and Public Policy Research at Florida State University's College of Criminology and Criminal Justice and is the editor of *Criminology and Public Policy*. He has been published many times and has delivered several hundred presentations and papers since joining the faculty of the College of Criminology and Criminal Justice in 1973.

### **Douglas P. Boer, Ph.D.**, drdoug@waikato.ac.nz

Since January of 2006, Doug has worked as the Director of Clinical Psychology at the University of Waikato in New Zealand. Prior to that, he was employed by the Correctional Service of Canada (CSC) for 15 years in a variety of roles, including: sex offender therapist, institutional psychologist, sex offender program director, senior and regional psychologist. While working for CSC, he co-published a number of articles and assessment manuals for use with offenders, most notably the Sexual Violence Risk – 20. Doug continues to publish and do workshops in the risk assessment and management of offenders.

## ICCA CONFERENCE SPEAKERS

**Brad Bogue**, bradbogue@aol.com

Brad Bogue is the Director of Justice Systems Assessment and Training in Boulder, Colorado. He is a seasoned investigator, author and internationally recognized expert in probation case management practices. He was trained as a Motivational Interview trainer by William Miller and has been training MI and implementing MI 'to scale' in corrections systems ever since. He is currently the Primary Investigator for a national, multi-site study on "High Performing Correctional Organizations; he has been the principal investigator for over 70 program evaluations in community corrections. Bogue designed the Risk & Resiliency Check-Up assessment that RAND Corporation recently validated (2006).

**Tim Brennan, Ph. D.**, Ttbrennan38@earthlink.net

Tim Brennan is probably best known as co-author of *The Social Psychology of Runaways* and his chapters on criminological classification in *Criminal Justice Annual Reviews*. In addition to academic publications Dr. Brennan's work has been reported in the BBC, National Public Radio, ABC-TV's 20/20, Psychology Today, and other popular media. He consults regularly on offender classification and risk assessment for the National Institute of Corrections; and many State and Local Departments of Corrections. He is Senior Vice President and Senior Scientist with Northpointe Institute for Public Management. Tim Brennan received his Ph.D from Lancaster University, England.

**Jane Browning**, jrbrowning@iccaweb.org

Jane Browning is the Executive Director of the International Community Corrections Association in Washington, D.C. She is a member of the NIJ Community Corrections Research Network and an active member of the Justice Roundtable's Reentry Working Group. She directed a BJA-funded project developing a Compendium of Evidence-Based Practices in Community Corrections. She is also currently Project Director of an NIC-funded research project evaluating reentry outcomes of FBOP clients. Formerly Executive Director of the Learning Disabilities Association of America, Ms. Browning served in the Clinton Administration as Executive Director of the President's Committee on Mental Retardation

**William D. Burrell**, william.burrell@comcast.net

William D. Burrell is an independent corrections management consultant specializing in community corrections, evidence-based practices and performance measurement. He served for nineteen years as chief of adult probation services for the New Jersey state court system. Burrell is chairman of the Editorial Committee for *Perspectives*, the journal of the American Probation and Parole Association, and write a bimonthly column on management issues for *Community Corrections Report*. He currently serves as a consultant to the Urban Institute's Justice Policy Center.

**Mary Butler**, mbutler@co.napa.ca.us

Ms. Butler is a licensed marriage, child and family counselor with more than 20 years of experience and has provided mental health services in a variety of settings for children, adults and families. Ms. Butler ran the mental health program for adult offenders in Napa County's Conditional Release Program and was the Behavioral

Health Care manager for the Department of Health and Human Services for five years before becoming the chief probation officer for the Napa County Probation Department. She is a member of the California Association of Marriage and Family Therapists and the American Probation and Parole Association.

**Todd Clear**, tclear@jjay.cuny.edu

Todd R. Clear is a Distinguished Professor, John Jay College of Criminal Justice, City University of New York, and Executive Officer of the Program of Doctoral Studies in Criminal Justice, The CUNY Graduate Center. He received his Ph.D. in Criminal Justice from The University at Albany. He served as professor at Ball State University, Rutgers University, and Florida State University. Clear has published three recent books on the topic of community justice: *Community Justice; What is Community Justice? and The Community Justice Ideal*. Other recent books include *The Offender in the Community and American Corrections* and *Harm in American Penology*.

**Linda Connelly**, lconnelly@lcaservices.com

Ms. Connelly is the founder of Leaders in Community Alternatives, Inc., a San Francisco based community corrections agency providing residential substance abuse treatment, electronic monitoring, GPS, case management, day reporting centers, and consulting services. Ms. Connelly is on the Board of Directors of the ICCA, and a member of the California Department of Corrections and Rehabilitation (CDCR) Reentry Advisory Council; the San Francisco Safe Communities Re-entry Council; and the California Gender Responsive Strategies Commission. Her organization developed the first residential treatment program for homeless parolees for the CDCR, and this successful program has been modeled throughout the state.

**Craig Cooper**, ccooper@tasc-il.org

Craig Cooper is Director of Operations for Illinois TASC. Over the past twenty years, he has served as an adolescent psychiatric counselor, juvenile correctional officer, college instructor and board member for the United Way. He is an adjunct Psychology Instructor for Lewis and Clark Community College and Saint Louis University. He currently is the Chairman for the Juvenile Justice Council and Chairs the Health Services Domestic Violence Committee for the Third Judicial Circuit. Mr. Cooper also serves as a board member for ICCA; the Illinois Association of Drug Court Professionals; and National Congress of Drug Court Professionals.

**Morris Copeland**, MorrisC@miamidade.gov

Mr. Morris Copeland is the Deputy Director at the Miami-Dade County Juvenile Services Department (JSD) a facility that has processed over 140,000 juvenile arrests in Miami-Dade County. Mr. Copeland oversees departmental operations including Intake and Screening, Prevention Services, Clinical Management and Diversion services. He has over 22 years of experience within the Juvenile Justice System, working throughout the juvenile justice continuum both with Department of Juvenile Justice and the Juvenile Services Department. His expertise in program development and implementation has afforded him the privilege of serving on numerous boards and committees throughout the County and the State of Florida.

## ICCA CONFERENCE SPEAKERS

**Pam Denmark**, denmark.pam@mail.dc.state.fl.us

Pam Denmark is the Deputy Assistant Secretary of Re-Entry for the Florida Department of Corrections. Ms. Denmark has a Master of Arts degree in Rehabilitation Counseling from the University of South Florida. She is a Certified Criminal Justice Addictions Professional (CCJAP). Ms. Denmark has over 25 years of corrections experience. She began her career in this field as a field probation officer and has extensive experience and leadership in the administration, development, monitoring, evaluation and procurement of in-prison and community-based Substance Abuse Prevention and Treatment, and other ancillary programs.

**Kevin Downey, Ph.D.**, kevin.downey@crosspointinc.us

Dr. Downey has a Ph.D. in Public Policy Analysis and Administration from St. Louis University, and has 23 years of administrative experience in agencies serving the mentally, physically and socially disenfranchised. Prior to becoming CEO at Crosspoint of San Antonio in January 2006, Downey was Director of Corrections Operations at TASC, Inc. of Illinois; administrator at residential correctional facilities in Iowa and Missouri; parole examiner for the Texas Board of Pardons and Paroles; and executive director of an organization serving people with developmentally disabilities and mentally illness in St. Louis. Dr. Downey is the new President of ICCA.

**George B. Drake**, gbdrake@comcast.net

George Drake is the Community Corrections Program Manager for the National Law Enforcement and Corrections Technology Center. He spends much of his time assisting agencies with planning, implementing and evaluating offender tracking programs. He oversees the center's *Electronic Monitoring Resource Center*, a website that serves as a knowledgebase for offender tracking technologies. Previously, Mr. Drake served with New Mexico's Probation and Parole Division, finishing his 25 year career as the agency's deputy director. Mr. Drake is best known for his pioneering work on the offender tracking technology. He has an MBA from New Mexico Highlands University with an undergraduate degree in Psychology.

**Dan Eberlein**

Dan Eberlein is a Correctional Programs Administrator for the Florida Department of Corrections. Mr. Eberlein has a Bachelor's degree in Business Administration from the University of South Dakota. He is a Certified Criminal Justice Addictions Professional (CCJAP). He has 20 years of corrections experience and 10 years experience as a treatment community in-prison program director.

**David Ensley**, Ensley.david@mail.dc.state.fl.us

David Ensley is Chief of Research and Data Analysis for the Florida Department of Corrections, where he and his staff provide information to upper management, the Florida legislature, and the public about inmates and offenders supervised in the community. Mr. Ensley's research includes recidivism analysis, inmate disruption, and forecasting methods. His recent projects

include the design and implementation of a random control study of substance abuse programs in prison and the creation of measures of facility-level disruption. He has worked as researcher for the state of Florida for 13 years and has an M.S. in Statistics from Florida State University.

**Donald G. Evans**, dge@sentex.net

Mr. Evans served in a number of senior executive positions in the Ontario Government. He is an adjunct professor at University of Toronto; President of the Board of the Canadian Training Institute; and Chair of the Citizens Advisory Committee of the Downtown Toronto Parole Office. Mr. Evans is past president of the Probation Officer's Association of Ontario, and the American Probation and Parole Association and a former member of the Board of Governor's of the American Correctional Association. He is Past President of the International Community Corrections Association (ICCA) and Executive Editor of the *ICCA Journal of Community Corrections*.

**Ralph Fretz, Ph.D.**, RFretz@cecintl.com

Dr. Ralph Fretz is the Director of Assessment and Research for Community Education Centers. Dr. Fretz earned his M.S.W. from Columbia University and his Ph.D. from Seton Hall School of Professional Psychology. His dissertation was selected for the Distinguished Dissertation Award. Dr. Fretz has worked with a variety of population including children, juvenile and adult offenders, psychiatric inpatients and sex offenders. His areas of interest include outcome research and risk assessment. Dr. Fretz's work has been published in corrections journals, including *Corrections Today* and *Corrections Compendium*. He has earned the Master Trainer status in the LSI-R and LS/CMI.

**Peter David Friedman, M.D., M.P.H.**

pfriedmann@lifespan.org

Dr. Friedmann is an established substance abuse health services researcher and addiction medicine physician. He has been published extensively in peer reviewed journals, books, and other scholarly works. His honors and awards include The Leo M. Davidoff Society Award, the prestigious Robert Wood Johnson Generalist Physician Faculty Scholar Award, New Investigator/Educator Award, Bruce M. Selya Award, and many more.

**Gregory Futch, CJM, CCE**, gfut@osceola.org

Chief Futch began his career with the Seminole County Sheriff's Office in 1982, working in every division within the agency. In 2004, Futch became Commander with the Brevard County Sheriff's Office as Director of Jail Operations. In 2006, he became Jail Director at the Flagler County Sheriff's Office. In 2008, Futch became the Director of Corrections for the Osceola County Corrections Department. Chief Futch has a BS in Criminology from Florida State University, completed graduate courses in Public Administration at the University of Virginia, and graduated the FBI National Academy and the FDLE Chief Executive Institute.

## ICCA CONFERENCE SPEAKERS

### **John L. Gannon, Ph.D.**, [jg@aa4cfp.org](mailto:jg@aa4cfp.org)

Dr. Gannon worked as a consultant for the California Youth Authority and as a psychologist for 8 years with the California Department of Corrections at the California Men's Colony in San Luis Obispo, where he served as Chairman of the Psychology Department and Chief of the Medical Staff. He is former President of the International Association for Correctional and Forensic Psychology, and is currently the Executive Director for that Association. Dr. Gannon is also President of "Directions" Educational Services, Inc. He holds Masters degrees in Psychology and Philosophy from Florida State University, and a Ph.D. from F.S.U. in Clinical Psychology.

### **Edward W. Gondolf, Ph.D.**

Dr. Gondolf has received a great deal of respect from his colleagues and has earned a national reputation in the field of domestic violence. He has been published extensively and his reputation has brought him numerous invitations for research, writing and guest lectures. Dr. Gondolf has received the Award of Distinction from the Pennsylvania Coalition Against Domestic Violence, the Sponsored Programs Award for Outstanding Achievement in Research from the Indiana University of Pennsylvania, and many more. He is Professor of Sociology at Indiana University of Pennsylvania and Director of Research, Mid-Atlantic Addiction Research & Training Institute (MARTI).

### **Derrick Gordon, Ph.D.**, [derrick.gordon@yale.edu](mailto:derrick.gordon@yale.edu)

Dr. Gordon is an Assistant Clinical Professor of Psychology in Psychiatry at the Yale University School of Medicine and at The Consultation Center where he is the Director of Research, Policy & Program on Male Development. Currently, he provides clinical supervision to facilitators across the State of Connecticut on issues related to intimate partner violence, supporting low income non-custodial fathers in their role, men transitioning back to their community, and adolescent fathers who may be committed to the Department of Children and Families. Dr. Gordon's work is focused on the integration and encouragement of health-promoting behaviors

### **Ken Gosnell, M.A.**, [kgosnell@fatherhood.org](mailto:kgosnell@fatherhood.org)

Ken Gosnell is the Associate Vice President of National Programming at the National Fatherhood Initiative. In this role, Ken oversees programs across the country that seeks to engage men to be more responsible fathers. In the area of corrections programming, Ken oversees trainings such as the InsideOut™ Dad program and is a specialist on reentry programming. He has created the model "Father Factor in Reentry" and has helped this model be accepted and practice in 15 state departments of corrections. Ken has written extensively on reentry issues and personal development and continues to write for several corrections magazines.

### **Beverly Harman**

Beverly Harman is a Program Manager for the Florida Department of Corrections. She is a graduate of Indiana University and a member of Pi Sigma Alpha. Ms. Harman worked for many years in the health care industry at Miles Laboratories (now Bayer) in Elkhart, Indiana. She began her career in 1989 as the Health Services Administrator at Hillsborough Correctional Institution and has been the Regional Community Corrections Program Manager for nine years.

### **John Hattery**, [jhattery@hbi.org](mailto:jhattery@hbi.org)

John Hattery has worked with adjudicated youth at most levels of juvenile justice involvement and is now Director of Workforce Training and Employment for Home Builders Institute. He leads the Home Builders Institute's Project CRAFT and Project TRADE training programs for youthful and adult offenders in 14 multi-state sites. John also oversees the Labor Department-funded 21st Century Craft Skills program which involves the establishment of innovative apprenticeship programs in Atlanta, Albuquerque, and Columbus, Ohio. He is a Technical Assistance provider for HUD sponsored YouthBuild programs across the country. John holds a B.A. in Sociology from McDaniel College in western Maryland.

### **Sean Hosman**, [shosman@assessments.com](mailto:shosman@assessments.com)

Sean Hosman is president Assessments.com with 12 years experience working closely with over 75 public and private juvenile and adult justice agencies implementing Evidence-Based Practices (EBP). His expertise includes software development, staff training, assessment research, project design and oversight, and interim outcome measurement, Principles of Effective Intervention, and Motivational Interviewing. Mr. Hosman received his law degree from Brigham Young University. He is a member of Utah State Bar, the Colorado State Bar and the American Bar Association. He is also a member of the Motivational Interviewing Network of Trainers (MINT).

### **Joanne Katz, J.D.**, [katz@missouriwestern.edu](mailto:katz@missouriwestern.edu)

Joanne Katz is a Professor in the Department of Criminal Justice/Legal Studies at Missouri Western State University. A former director of a COPS Regional Community Policing Institute, Professor Katz has researched and implemented programming in the areas of restorative justice, citizen participation in the criminal justice system and collaboration and conflict resolution. Professor Katz was named Distinguished Professor in 2009 at her university, honoring her work in restorative justice. She is on the executive committee of the Restorative Community Justice Section for the Academy of Criminal Justice Sciences.

## ICCA CONFERENCE SPEAKERS

### **Pamela K. Lattimore, Ph.D.**, lattimore@rti.org

Dr. Lattimore is a Principal Scientist at RTI International. She is the co-PI of the Multi-site Evaluation of the Serious and Violent Offender Reentry Initiative and is the co-Investigator of a study assessing the prevalence of traumatic brain injury in SC prisoners and the relationship between TBI and recidivism. Her research has examined the effectiveness of substance abuse treatment and drug courts, jail diversion, and services and treatment for juvenile arrestees. Dr. Lattimore has published extensively, serves on several journal editorial boards, and was Chair of the American Society of Criminology's Division on Corrections and Sentencing, 2001-2003.

### **A. Stephen Lanza**, steve.lanza@familyreentry.org

As Executive Director of Family ReEntry, Mr. Lanza oversees a multitude of community justice, reentry and clinical programs. He is an adjunct faculty at the University of Connecticut and psychotherapist/clinical supervisor in private practice. He serves as a member of Connecticut's *Fatherhood Advisory Counsel* and Special Master for the Superior Court. He has served as: Director and Research/ Training Coordinator for the University of Connecticut, School of Family Studies' *Family Violence Project*, editor for the *Connecticut Association for Marriage and Family Therapy* and its Board of Directors, and as lecturer in the MFY Graduate Program at the Fairfield University.

### **Nancy G Lavigne, Ph.D.**, nlavigne@urban.org

Dr. LaVigne is a Senior Research Associate at the Urban Institute. Her research areas include the geographic analysis of crime, situational crime prevention, community policing, and offender reentry. Previously, Dr. LaVigne was Founding Director of the National Institute of Justice's Crime Mapping Research Center. Her previous work experience includes consulting for the Police Executive Research Forum, the National Council on Crime and Delinquency, and the National Development and Research Institute. She holds a Ph.D. in Criminal Justice from Rutgers University and a Masters Degree in Public Affairs from the University of Texas.

### **The Honorable Steven Leifman**

Judge Leifman chairs the Supreme Court of Florida Mental Health Subcommittee and the Mental Health Committee for the Eleventh Judicial Circuit of Florida. Judge Leifman was responsible for creating the Eleventh Judicial Circuit Criminal Mental Health Project which diverts non-violent misdemeanor defendants with mental illnesses to appropriate mental health facilities and provides Crisis Intervention Team training for law enforcement agencies. The program reduces recidivism, saves critical funds and has saved lives. In recognition of this program, the Project was awarded the 2001 Council of State Governments Innovations Award and a million dollar SAMSHA Jail Diversion Expansion Grant.

### **Kevin "Kip" Lowe, Ph.D.**, KLowe@changecompanies.net

Dr. Lowe is the Vice President of Training for the Change Companies; he is retired from the California Department of Corrections and Rehabilitation after 28 years of state service. Dr. Lowe served as Deputy Director for the Office of Prevention and Victim Services, and Assistant Deputy Director for the Institutions and Camps Branch overseeing correctional treatment.

### **Karol M. Lucken, Ph.D.**, lucken@mail.ucf.edu

Dr. Lucken is Associate Professor in the Department of Criminal Justice and Legal Studies at the University of Central Florida in Orlando. She received her Doctorate in Criminology from Florida State University. She was a probation officer with the Orange County Corrections Division from 1988-1990. She has published numerous journal articles on barriers to employment for ex-offenders, sex offender management, victims' issues, and the history and nature of penology.

### **Lana E. Maloney**

Lana Maloney, M.A., is Area Director of Restorative Resolutions for the John Howard Society of Manitoba, out of Winnipeg, a position she has held for the past four years. Lana has worked in various positions in the Criminal Justice system since 1982. Prior to her work with Restorative Resolutions, she taught at the University of Manitoba in the Criminology Department. Lana served as a member of the ICCA Board for a term 2003-2005, and was a workshop presenter at the ICCA 2008 Annual Research Conference in San Diego.

### **Marc Mauer**

Marc Mauer is Executive director of The Sentencing Project and is one of the leading authorities on racism in the criminal justice system. As a result of The Sentencing Project's research, publications and advocacy, many people know that this country is the world's leader in incarceration. In speeches, research publications, congressional testimony, organizing and lobbying Mauer has worked hard to expose racism in all facets of the system. He is also actively challenging negative social consequences of incarceration such as the denial of the right to vote.

### **M. David McGriff, Ph.D.**, mdmphd@advocateprogram.org

McGriff is CEO of the Advocate Program, Inc; his association with the program dates to 1973. Dr. McGriff holds a Ph.D. in Criminal Justice from the University of Miami. He previously served as Criminal Justice Administrator for the Eleventh Judicial Circuit, overseeing Criminal, Juvenile, and Traffic Court operations. Dr. McGriff is on the Board of Directors of the American Probation and Parole Association and is Past President of the Florida Association of Community Corrections. The Advocate Program helped establish the Dade County Domestic Violence Court. Dr. McGriff established and is Chairman of the Board of Victim Response, Inc.

### **Secretary Walter McNeil**

Secretary McNeil holds a Masters Degree in Criminal Justice from St. Johns University in Springfield, Louisiana, and is doing graduate work in Criminal Justice at the University of Virginia; his BS is from University of Southern Mississippi. He also graduated the FBI National Academy, the Florida Criminal Justice Chief Executive Institute, the U.S. Department of Justice Executive Management Development Program, and the Unisys Corporation program on "Managing People." He is an Adjunct College Instructor at Florida A&M University and currently serves as a Board Member of the International Association of Chiefs of Police.

## ICCA CONFERENCE SPEAKERS

### **Katherine McQuay**

Katherine McQuay is a Policy Analyst in charge of Partnership Development at the U.S. Department of Justice, Office of Community Oriented Policing Services. Her experience in prisoner reentry includes leading several programs designed to help individuals released from prison successfully return to society. She also has contributed to building coalitions between local officials and the community, developing programs to prevent youth violence, and encouraging law enforcement and faith-based community partnerships.

### **Linn Miller**, [mkmiller@doc1.wa.gov](mailto:mkmiller@doc1.wa.gov)

Linn Miller is the Community Corrections Program Manager for the Washington State Department of Corrections. He has over 30 years experience in corrections. He led the Community Corrections effort for the implementation of the static risk assessment developed by the Washington State Institute for Public Policy. He is now working with the Washington State prisons in fully implementing its use. He is a project team co-lead implementing legislation from this past Washington State legislative session which uses the static risk assessment as one measure determine which felony offenders will actually receive community supervision.

### **Matt Moore**, [matt.moore@bi.com](mailto:matt.moore@bi.com)

Mr. Moore has worked with community corrections programs for juveniles, probationers and parolees for nearly 20 years, working in secure facilities and non-secure residential facilities. Along with his work with at-risk populations and offenders, Mr. Moore is accomplished in the design and execution of community corrections programs. Operation Eiger/Nova, an intensive treatment and supervision program for violent juvenile offenders, supervised by Mr. Moore, was found to reduce recidivism 50 percent by an independent study commissioned by the Office of Juvenile Justice Delinquency Prevention. Currently, Mr. Moore oversees five day reporting centers, including the Napa County Community Corrections Service Center.

### **Phil Nunes**

Phil Nunes is Vice President for Correctional Programs at Oriana House Treatment Center in Cleveland, Ohio. He previously served in the United States Army and later became the Chief Operating Officer for Community Corrections, Inc., in Youngstown, Ohio. In 2001, Mr. Nunes moved to Volunteers of America in Brecksville, Ohio. During this time he completed the Executive Leadership course at Case Western Reserve University. Phil is immediate past president of the Ohio Justice Alliance for Community Corrections, past and current president of the Ohio Community Corrections Association, member of the Ohio Sentencing Commission, and appointed to the Ohio Community Corrections Advisory Board.

### **Randy Otto, Ph.D.**, [otto@fmhi.usf.edu](mailto:otto@fmhi.usf.edu)

Otto is Associate Professor in the Department of Mental Health Law and Policy, University of Southern Florida. He holds degrees in clinical psychology from Florida State University, and completed an NIMH-funded fellowship in Law and Psychology at the University of Nebraska. Dr. Otto has served as President of the American Academy of Forensic Psychology, the American Psychology-Law Society, and the American Board of Forensic Psychology. Dr. Otto has published numerous articles and book chapters and recently co-authored the third edition of *Psychological Evaluations for the Courts: A Handbook for Mental Health Professionals and Lawyers*.

### **Mark Paulus**, [mpaulus@alvishouse.org](mailto:mpaulus@alvishouse.org)

Mark Paulus is Vice President of Programs at Alvis House in Columbus, Ohio.

### **Richard W. Pearce**

Richard W. Pearce is a Program Manager for the Florida Department of Corrections. Mr. Pearce has a Bachelor's Degree from the Florida Southern College in Lakeland, Florida. He has been with the Florida Department of Corrections for 25 years and has work in Programs for 15 years. Mr. Pearce is well experienced in the operations of monitoring and data collection for community corrections programs.

### **Secretary Frank Peterman, Jr.**

Secretary Peterman began his career as a juvenile services counselor and parole and probation officer trainee. In 1988, he accepted a position as director of development for the Juvenile Services Program Inc. of Clearwater. He was elected in 1997 to the St. Petersburg City Council, and in 2000, to the Florida House of Representatives where he served until accepting his appointment to the Florida Department of Juvenile Justice in 2008. Secretary Peterman received a B.A. in English from Morehouse College, and completed coursework for an M.A. from the Dallas Theological Seminary.

### **Roger H. Peters, Ph.D.**, [peters@fmhi.usf.edu](mailto:peters@fmhi.usf.edu)

Dr. Peters serves as Chair and Professor in the Department of Mental Health Law and Policy as the Louis de la Parte Florida Mental Health Institute, University of South Florida. He has served as Principle Investigator and Director for several grant projects, including the SAMHSA- funded Suncoast Practice and Research Collaborative project. Dr. Peters currently serves on the Treatment-Based Drug Court Steering Committee for the Supreme Court of Florida. On March 20, 2007, Dr. Peters provided testimony to the U.S. House Judiciary Committee on the "Second Chance Act of 2007" legislation.

## ICCA CONFERENCE SPEAKERS

### **Carissa Phelps, J.D.**

Carissa Phelps is currently the Director of Strategic Accounts of The WhyTry Organization. She is a motivational speaker and advocate for at-risk youth. Abandoned at the age of 12, Carissa found herself in several group homes, juvenile hall and ultimately homeless in Fresno, Coalinga and Huron, California. Despite her circumstances, Phelps returned to high school, went on to graduate *Summa cum laude* from Fresno State in mathematics. She eventually completed her J.D. and M.B.A. at UCLA. Carissa now uses her inspiring story and best practice approaches to building resiliency with school administrators, nonprofit program directors, and county agencies.

### **Don Pittman**, don.pittman@ocfl.net

Don Pittman is the Chief Probation Supervisor for the Orange County Corrections Department in Orlando, Florida. He has held this position for almost 20 years. Don has been President of the Florida Association of Community Corrections and he is an active member of many community agency boards in Central Florida. Don has over 30 years of experience in management, program planning, implementation and monitoring. The Orange County Probation Unit was the first in the United States to be accredited by the American Correctional Association.

**Lauren Rabbito-Goldberg**, Lauren-Rabbito@miamidade.gov  
Lauren Rabbito-Goldberg has been involved in child advocacy for ten years. She currently serves as the Acting Juvenile Assessment Supervisor within the Clinical Unit of the Miami-Dade County Juvenile Services Department. Her responsibilities include supervision of case managers and diversion programs including the Intensive Delinquency Diversionary Services (IDDS) for juveniles with a moderate to high risk level. She also oversees administration of the Civil Citation Initiative, an alternative to arrest which has served more than 5,000 juveniles. Lauren received her Master's degree in Social Work from Florida International University and her Bachelor's Degree from University of Florida.

### **Jennifer Rechichi**, Jennifer.rechichi@djj.state.fl.us

Jennifer Rechichi is the Author, with Michael T. Baglivio, of "The Three R's for Juvenile Delinquency: Reducing Recidivism through Research." Ms. Rechichi is the Administrator of the Programming and Technical Assistance Unit in the Office of Program Accountability at the Florida Department of Juvenile Justice.

### **Denise Robinson**, drobinson@alvishouse.org

Robinson is the president and CEO of Alvis House. Denise is also past president of the ICCA and the Ohio Community Corrections Association. She was honored by the YWCA-Columbus as one of the six 2008 "Women of Achievement," recognized for her outstanding contributions to the community. Robinson has served the past four years as a Commissioner for the Commission on Accreditation for Corrections; serves on the

board of the International Association of Reentry; and also serves as the ICCA representative to the American Correctional Association's Delegate Assembly. Robinson holds a Bachelor of Arts Degree from The Ohio State University.

### **Lorraine Robinson**, lorraine@reawakeningforwomen.org

Lorraine Robinson has extensive expertise with women in the criminal justice system. She has served as Executive Director of Ka Hale Ho'āla Hou No Nā Wāhine, a residential reentry program for women offenders in Honolulu, Hawaii since 1995. Lorraine was a master trainer for the federally sponsored Serious and Violent Offender Re-entry Initiative (SVORI), and has received numerous accolades and awards for her distinguished service to female offenders. She serves on various community boards and is known throughout Hawaii for her advocacy and expertise on women with criminal justice involvement.

### **Stew Rowles**, stew.rowles@gmail.com

Stew Rowles received his Masters of Science in 1988 from the Center for the Study of Crime, Corrections and Delinquency in Southern Illinois University. He has worked in the community corrections field for 20 years; first serving as an Administrator at the Community Corrections and Detention Services branch of the Federal Bureau of Prisons from 2001-2007 and then as an Administrator for the Intelligence and Counter Terrorism Branch. Now retired from the Department of Justice, Stew is an associate with Barrick Consulting Services.

### **Stanley Sacks, Ph.D.**

Dr. Sacks is the Director of the Center of Research and Practice (CIRP) at National Development and Research Institutes (NDRI). In a series of research studies, he demonstrated the effectiveness of integrated treatment for people with serious mental illness and co-occurring substance use disorders. Dr. Sacks is currently the Principle Investigator on several NIDA-funded studies and is the Director of New York State Health Foundation's *Center for Excellence in Integrated Care*, dedicated to improving the clinical care of New York State residents with co-occurring disorders enrolled in outpatient addiction and mental health programs.

### **Carol Shapiro**, carol@familyjustice.org

Carol Shapiro is known throughout the country as an innovator in criminal justice reform. For more than 30 years she has developed numerous approaches to improving public safety and family well-being through her work in the fields of substance abuse, mental health, housing, and law enforcement. As the Founder and President of Family Justice, Carol served as an adviser to many government and citizen-sector initiatives as organizations adopt a family-focused approach in their work. Additionally, she provides technical assistance and consulting services on policy, planning, and implementation of justice-related reform to federal, state, and local governments, non-profits, and the media.

## ICCA CONFERENCE SPEAKERS

**Randy Shively, Ph.D.**, randyshively@alvishouse.org

Randy is a licensed psychologist who for 20 years has treated clients with mental health, mental retardation, sexual risk, and offending issues. He is Vice President/Clinical Services at Alvis House, a community corrections agency in Columbus, Ohio. He has a doctorate in psychology from The Ohio State University and is an Independent Chemical Dependency Counselor. Randy has published articles on clinical approaches in working with offenders, as well as *Equipped for Life*, an educational game to use in teaching healthy thinking, and treatment issues in offenders with Mental Retardation.

**Leonard Adam Sipes Jr.**, Leonard.sipes@csosa.gov

Len Sipes is an accomplished public affairs executive, project manager, legislative liaison and senior advisor. Since January 2004, Mr. Sipes has been employed as the Senior Public Affairs Specialist for Court Services and Offender Supervision Agency, a new federal executive branch agency. He has designed and implemented an innovative public affairs program involving a new web site, television production, audio and video programs and multiple articles published by national criminal justice publications. He has the highest rated criminal justice social media site in America.

**Kimberly Sperber, Ph.D.**, Kimberly.Sperber@talberthouse.org

Kimberly Gentry Sperber received her Ph.D. in Criminal Justice from the University of Cincinnati in 2003 and has worked in the field for 15 years. Her areas of expertise include CQI, outcomes evaluation, implementation of best practices, correctional risk/needs assessment, accreditation, and organizational risk management. Dr. Sperber currently works as the Chief Research Officer for Talbert House training staff on the LSI-R and cognitive-behavioral interventions, educating staff on best practice research, helping staff to put research into practice, and measuring program effectiveness. Prior to this, she spent 6 years coordinating the CQI process for the Talbert House Affiliation.

**Faye S. Taxman, Ph.D.**, ftaxman@gmu.edu

Faye Taxman is Professor, Administration of Justice Department, George Mason University, recognized for her work in the development of the seamless systems of care models that link criminal justice with other service delivery systems as well as reengineering probation and parole supervision services, and organizational change models. She is the senior author of *Tools of the Trade: A Guide to Incorporating Science into Practice*, a publication of the National Institute on Corrections which provides a guidebook to implementation of science-based concepts into practice. She has a Ph.D. from Rutgers University-School of Criminal Justice and a B.A. from University of Tulsa.

**Michael A. Tidwell**, Michael.tidwell@ocfl.net

Michael A. Tidwell assumed the leadership of the Orange County Corrections Department on July 15, 2007, bringing a rich background in both law enforcement and corrections, having served in the U.S. Army in military police, as a Deputy U.S. Marshal, and in various leadership roles in correctional institutions both large and small. Prior to his appointment, Chief Tidwell retired as Jail Director of the Seminole County Sheriff's Office. He also served as the Osceola County Jail Director for 5 years. Chief Tidwell is an American Jail Association Certified Jail Manager (CJM) and an American Correctional Association Certified Corrections Executive (CCE).

**Dennis Torbett**, dtorbett@hbi.org

Dennis Torbett is currently Vice President, Workforce Training and Employment, Home Builders Institute. He has directed residential construction apprenticeship and pre-apprenticeship training programs at over 50 sites nationwide. Mr. Torbett oversees operations for grants and contracts with the U.S. Departments of Labor, Justice, Education and Housing and Urban Development, and State departments in Florida, Mississippi and Illinois. For his entire career, Mr. Torbett has championed training and employment/career opportunities for the most disenfranchised and disadvantaged, helping people "build a better life" in the home building industry. He holds a B.S. in Business and Management from the University of Maryland.

**Patricia Van Voorhis, Ph.D.**, patricia.vanvoorhis@uc.edu

Dr. Van Voorhis is a Professor of Criminal Justice at the University of Cincinnati and Director of the University of Cincinnati Corrections Institute. She has published extensively in the leading criminology and criminal justice journals and is the author of *Psychological Classification of the Adult, Male Prison Inmate*, and lead author of *Correctional Counseling and Rehabilitation*, currently in its 6th edition. She consults with federal, state and local agencies on correctional effectiveness, program implementation, evaluation techniques, women offenders, risk assessment and correctional classification. She has directed numerous research projects on inmate classification, gender-responsive assessment, program implementation, cognitive-behavioral interventions, and correctional effectiveness.

**Bas Vogelvang, Ph.D.**, Vogelvang@chello.nl

Dr. Vogelvang is a professor of probation and safety policy at Avans University in the Netherlands. He is also the Director of New Perspectives program development for the Van Monfoort Research and Development.

# ICCA CONFERENCE LOCAL FACILITY TOURS

## **CENTRAL RECEIVING CENTER**

The Central Receiving Center (CRC) opened in April 2003 as the first integrated crisis receiving center for mental health and substance abuse in the State of Florida. The CRC offers law enforcement an opportunity to bypass busy emergency departments of local hospitals and divert from jail consumers with mental illness and serious addictive disorders. The CRC offers a seamless system of care limiting the time law enforcement officers are out-of-service due to crisis calls of consumers with acute care needs. Consequently, the time spent for law enforcement at the CRC is currently seven minutes, as compared to previous processing procedures requiring two to four hours. The CRC has achieved efficiency for law enforcement; an integrated system of care for our community; cost savings for local hospitals; efficient use of scarce resources; and lowering costs for our jail in processing, medications, risk, and supervision. In 2005 the CRC was awarded the "Most Innovative Program" by the Department of Children and Families, and the Florida Alcohol and Drug Abuse Association.

## **HOME BUILDERS INC.**

Home Builders Institute, the workforce development arm of the National Association of Home Builders, invites ICCA members and attendees to Project CRAFT-Orlando. This community based, vocational training and job placement program has been introducing court-involved youth to the residential construction industry for over 10 years in partnership the Florida Department of Juvenile Justice and the Orange County Public Schools. As students learn entry level skills in General Construction and Landscaping in a hands-on environment, there are corresponding gains in the students' academic performance and self esteem, resulting in lower recidivism rates. The Tour will let you see how HBI uses training stations, and real world-real work experience coupled with academic remediation to prepare students for life after DJJ involvement.

## **ORANGE YOUTH ACADEMY**

The Orange Youth Academy is a high-risk residential 48-bed male program with an anticipated length of stay of 9-12 months. The program provides Mental Health Overlay Services. Treatment and educational programs are based on the therapeutic community model, incorporate the principles of restorative justice and reflect proven cognitive-behavioral treatment modalities. The goal is to provide an environment that offers opportunity for growth and fosters feelings of safety and well being. Residents participate in psychotherapeutic process groups, individual therapy and family reunification to: help them learn to identify feelings, process events; gain control over their abusive behavior, victim reparation skills, post trauma; and to increase their pro-social interaction with peers.

## **DISMAS CHARITIES, INC.**

Dismas Charities, Inc. is one of the nation's largest not-for-profit providers specializing in community-based re-entry programs. Dismas provides both residential and non-residential pervision and treatment services for federal, state and local criminal justice jurisdictions. Headquartered in Louisville, Kentucky, Dismas currently operates 25 facilities and 3 support offices in 10 states. The Orlando facility houses men and women who have been convicted of Federal offenses and offers reentry services. The mission of Dismas is to provide quality, cost-effective community-based supervision and treatment services to individuals within the criminal justice system. Healing the Human Spirit is the energy source behind Dismas' commitment to community-based corrections. Dismas Charities values the dignity of all individuals; we believe all individuals are entitled to be treated with respect and compassion.