



FAMILIES ARE  
PART OF THE SOLUTION



## A Family Focus: Meaningful Changes to Risk Instruments



A Presentation to the International Community  
Corrections Association

August 6<sup>th</sup>, 2009

# Problematizing Risk Instruments

- Standard risk and need assessments view individuals in isolation
  - Ignore social, family context
- Risk tools are deficits-based
  - Don't take into account resources or resiliencies of the individual and his/her social network





# Should Risk Instruments be Abandoned?

- Risk instruments can be important tools
  - Help line staff and mid-level managers provide appropriate pre-release services
- Risk instruments should be supplemented to include the strengths and social capital of the individuals and families they measure



# Supplementing Risk Instruments: The Relational Inquiry Tool

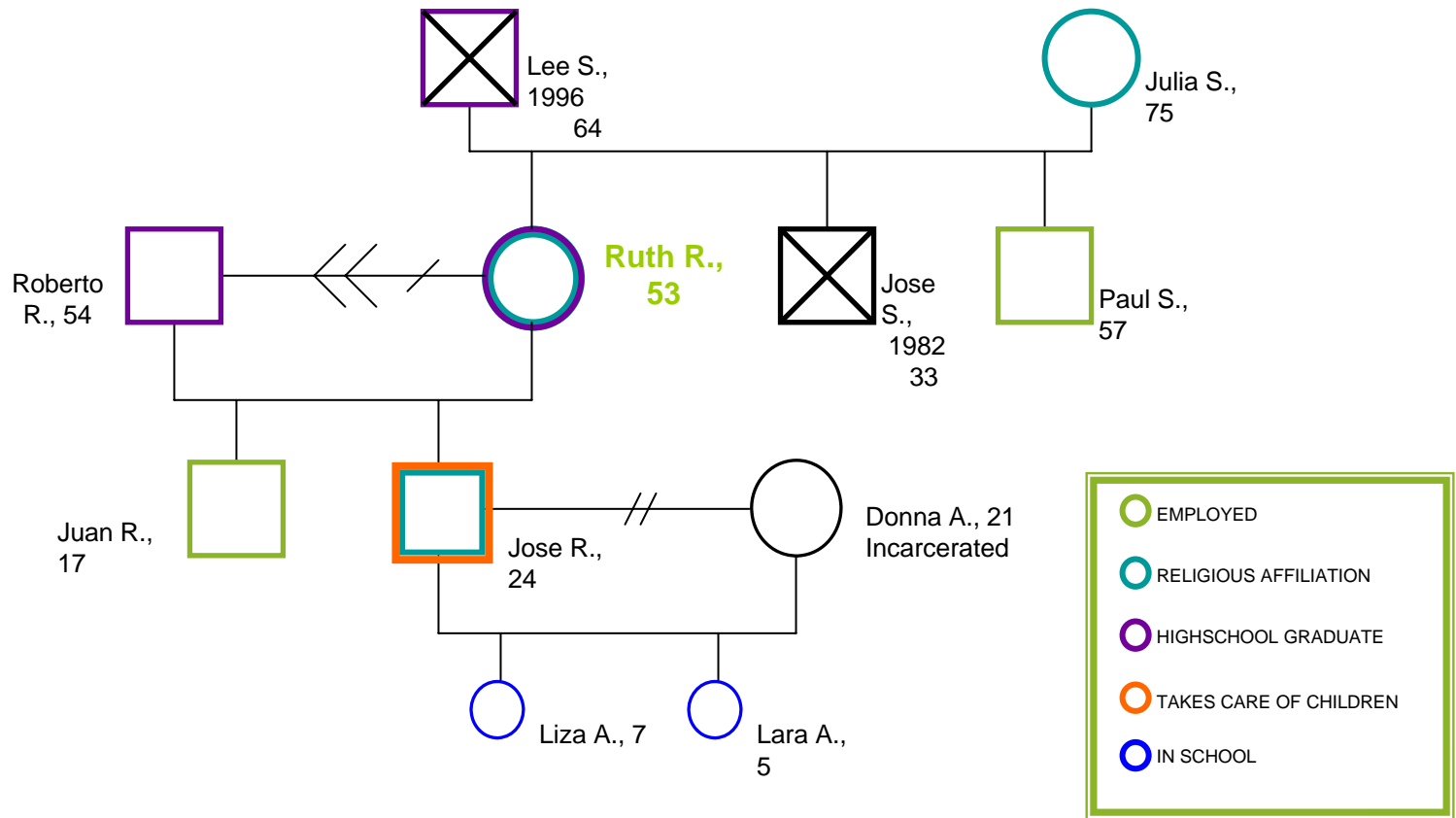
- User-friendly method of recognizing and reinforcing positive connections to family and social networks during and after incarceration
- Builds rapport between the professional using the tool and the incarcerated individual

- **Sample questions:**
  - **In thinking about your family support when you get out of prison, what are you most excited about?**
  - **If you could build a team of helpful family and friends now, who would you include on your team?**
  - **Will your family be able to provide assistance with housing? If you got sick, will someone in your family be able to take care of you?**

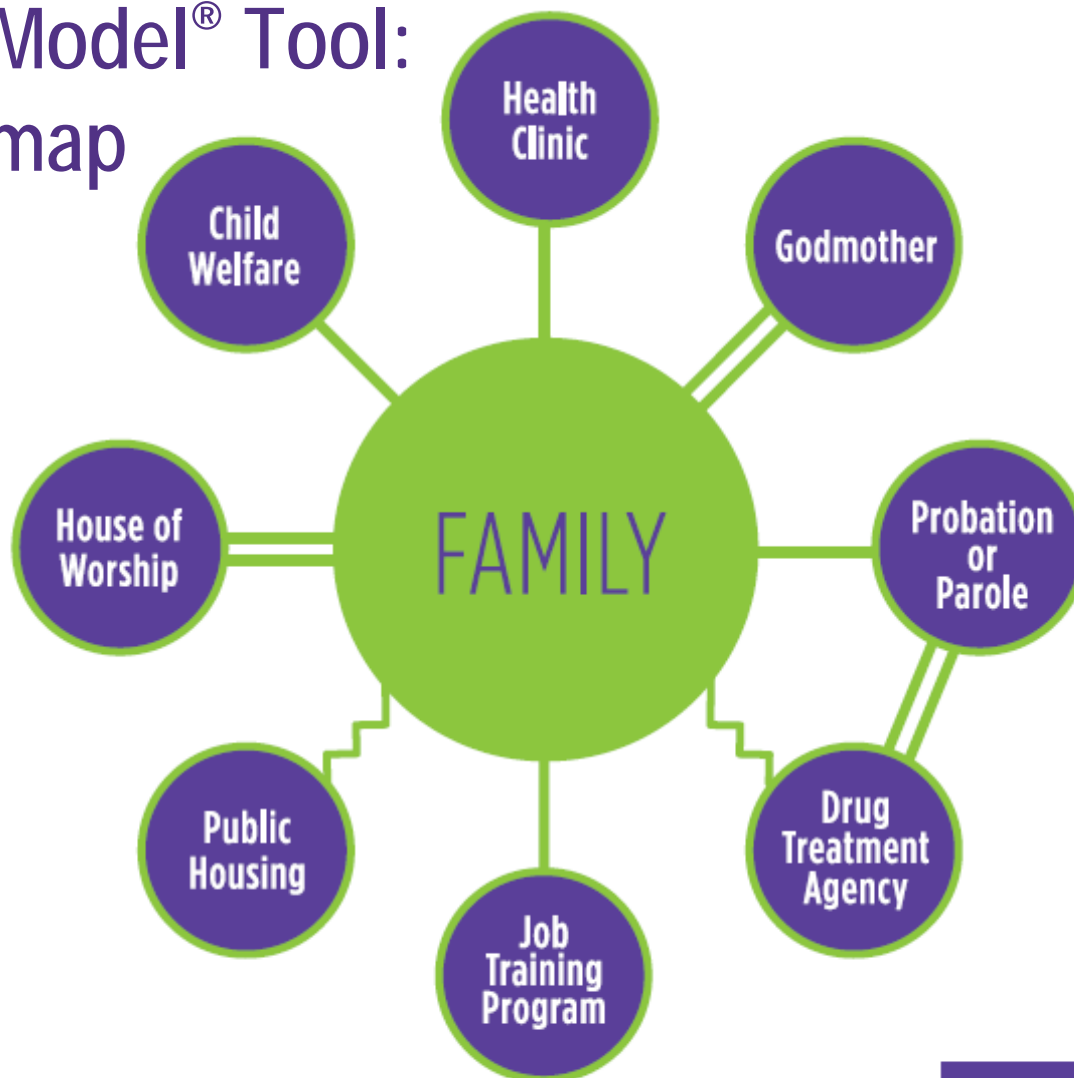




# Strength-Based Genogram



# Bodega Model<sup>®</sup> Tool: The Ecomap





FAMILIES ARE  
PART OF THE SOLUTION

Carol Shapiro  
Founder and President

[cshapiro@familyjustice.org](mailto:cshapiro@familyjustice.org)

(212) 475-1500

[www.familyjustice.org](http://www.familyjustice.org)