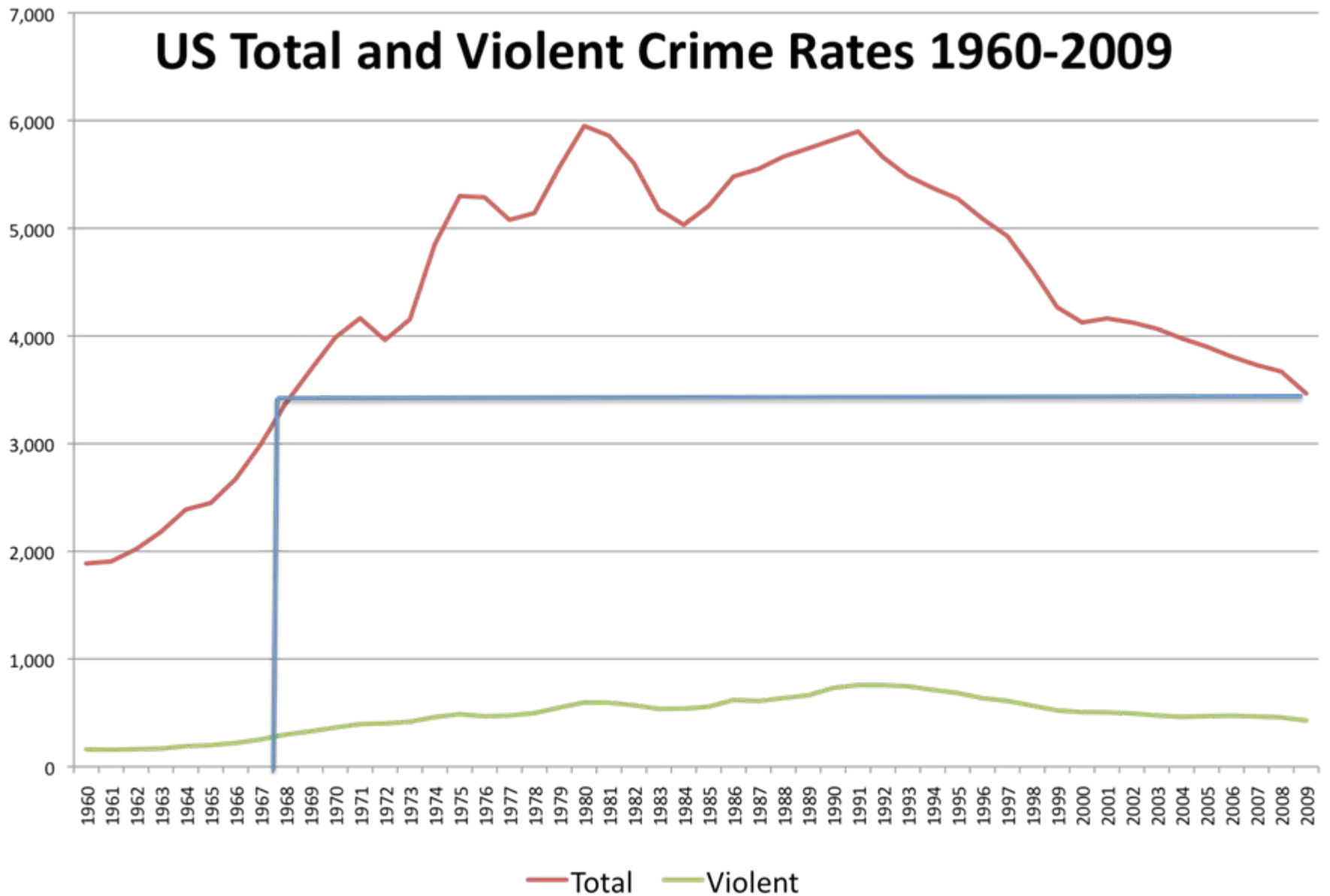


Summary of Federal Sentencing and BOP Prisoners Trends and Possible Options

James Austin, Ph.D.

jfainstitute@gmail.com

US Total and Violent Crime Rates 1960-2009



Crime and Imprisonment 1968 vs 2009

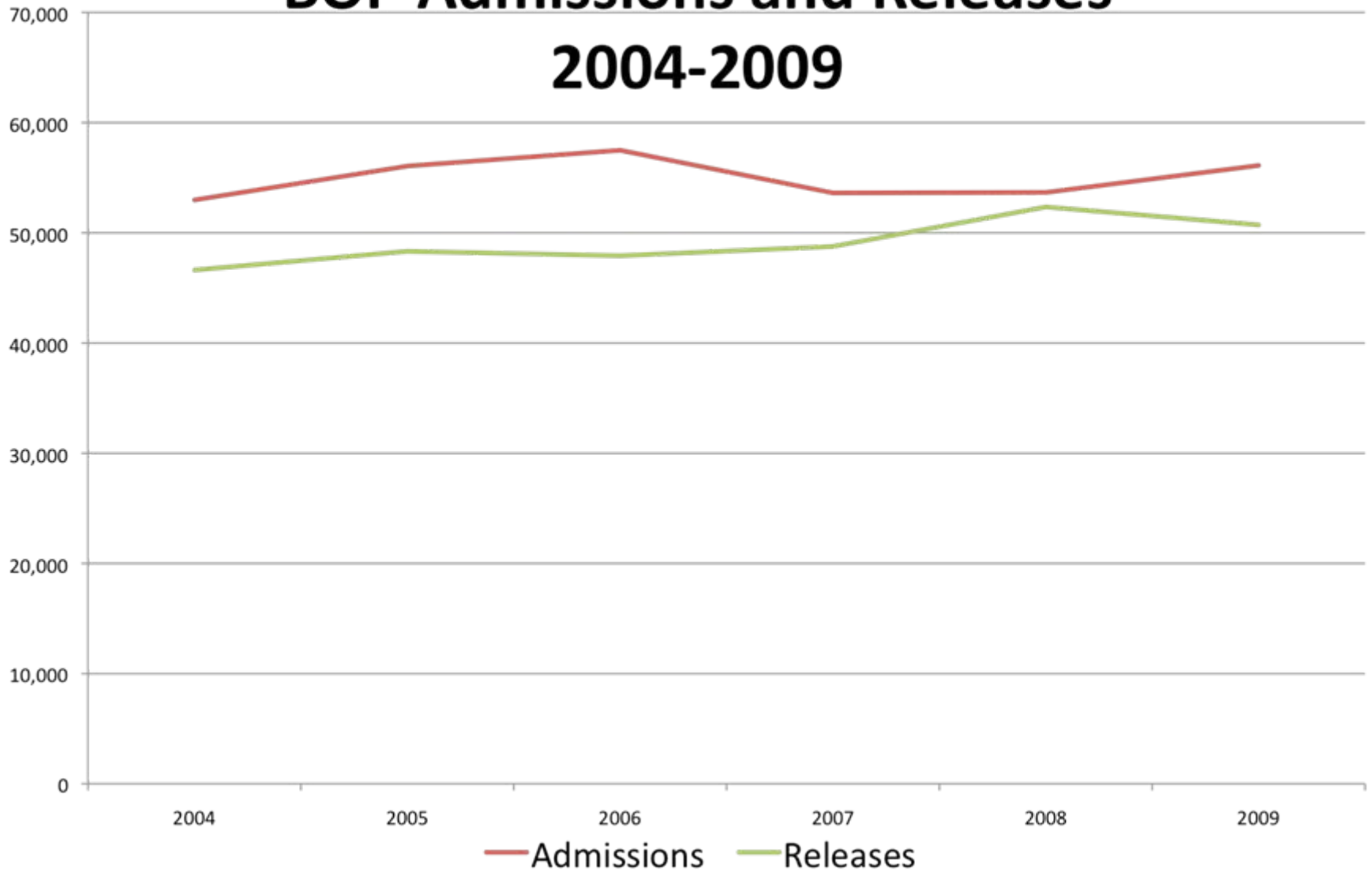
	1968	2009	% Change
Crime Rate	3,370	3,466	3%
Population	201 million	307 million	53%
State Prisons	168,211	1,405,622	736%
Federal Prisons	19,703	208,118	956%
Total	187,914	1,613,740	759%

BOP Prison Population 2004-2010

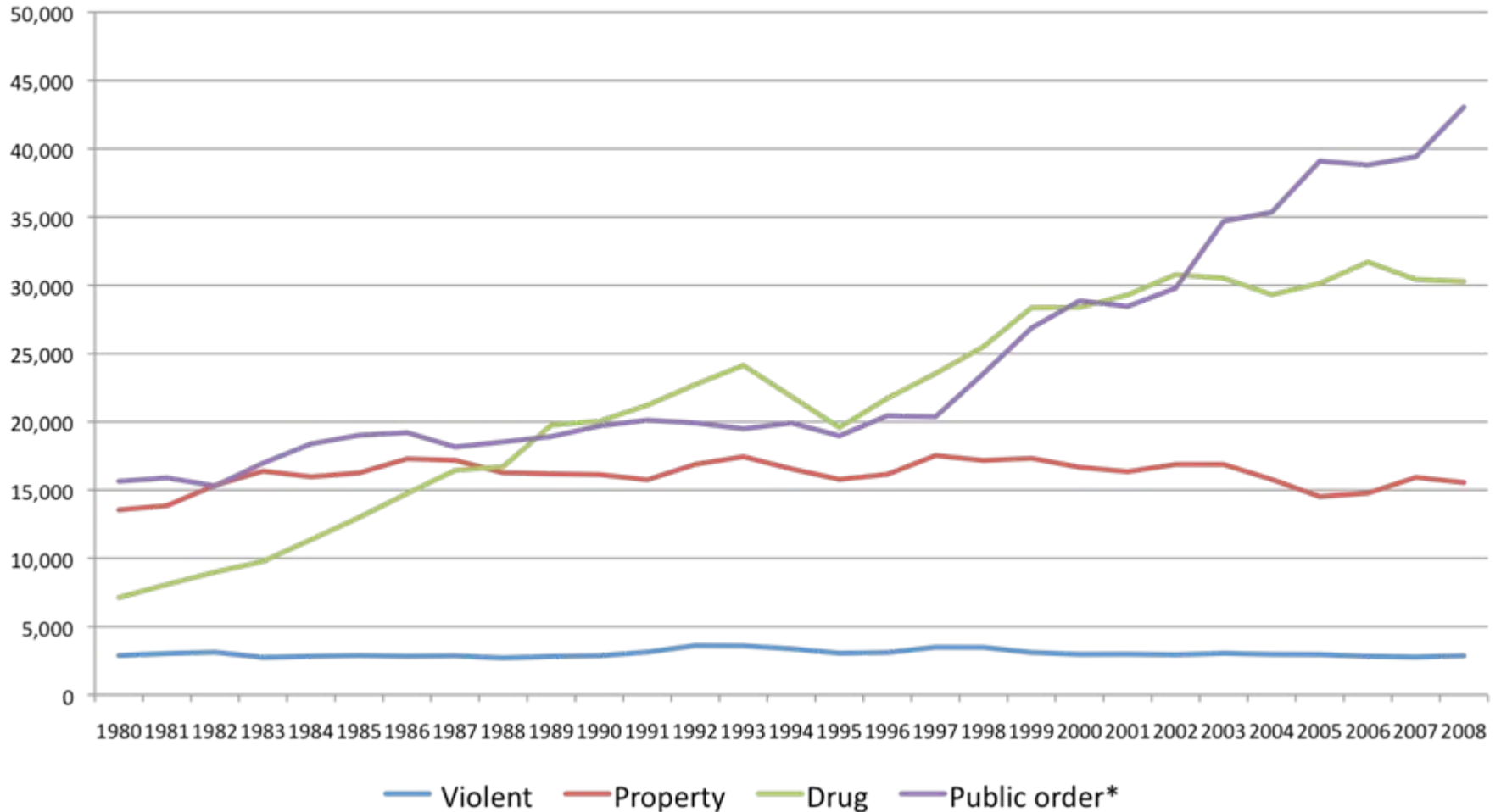


BOP Admissions and Releases

2004-2009



Cases Handled by the Federal Courts 1980-2008



State and Federal Comparisons

	Federal	States
Prison Disposition Rate	78%	41%
Total Sentence	60 mos	59 mos
Drug	85 mos	50 mos
Trafficking	85 mos	57 mos
LOS	39 mos	29 mos
% of Time Served	65%	49%

Failure on Supervised Release

	Total	Drug Cases
No Violations	55%	60%
Admin Closures	22%	19%
Total "Success"	77%	79%
Failures	23%	21%
Drug Use	6%	6%
Fugitive	2%	1%
Other	7%	6%
New Crime	8%	7%

Key Facts About BOP Inmates

1. Current count about 210,000 and still growing – current estimates have it growing to 220,000 by 2012.
2. By far the fastest growing system in the nation.
3. With the exception of California and Mass, the most crowded prison system in the nation.
4. 52% in for drug offenses – vast majority are trafficking
5. Most in low and minimum custody (55%) and about 45% are low risk to recidivate
6. About 3% of all prison terms are for violent crimes
7. Average current age is 39 years
8. 39% are Black and 33% are Hispanic
9. Low recidivism rate (about 13% get re-arrested and about 25% violate for tech reasons after 3 years)
10. About 45% have sentences of 10 years or more
11. Prison disposition rate for US District Courts is about 78% compared to 41% for state courts.

Possible Alternatives

1. If the BOP prison admissions had the same length of stay as state inmates (29 months) the BOP prison population would drop to about 130,000 (as opposed to about 175,000 non-ICE inmates)
2. If the prison disposition rate were to be at the same level as state courts (41% versus 78%) the BOP population would be about 110,000.
3. If both standards were achieved (LOS and Prison Disposition rates, the BOP population would be about 83,000.