

Diversion and the Sequential Intercept Model: Implications for Community Corrections

Kirk Heilbrun, PhD (kh33@drexel.edu)

Drexel University & PA Mental Health and Justice Center of Excellence

**Presented at the ICCA 18th Annual Research Conference on
“What Works” in Community Corrections**

Louisville, KY

November, 2010

The Problem

People with mental illnesses are overrepresented in the criminal justice system in the U.S.

- People with mental illness are arrested at high rates**
- Prevalence estimates of serious mental illnesses in jails range from 7-16%**
- People with mental illnesses in criminal justice settings require additional supervision/treatment at additional expense**
- With traditional models, outcomes for people with mental illnesses regarding arrest, incarceration, and supervision are poor**

One Solution: Diverting Those with MI and Substance Abuse from Prosecution

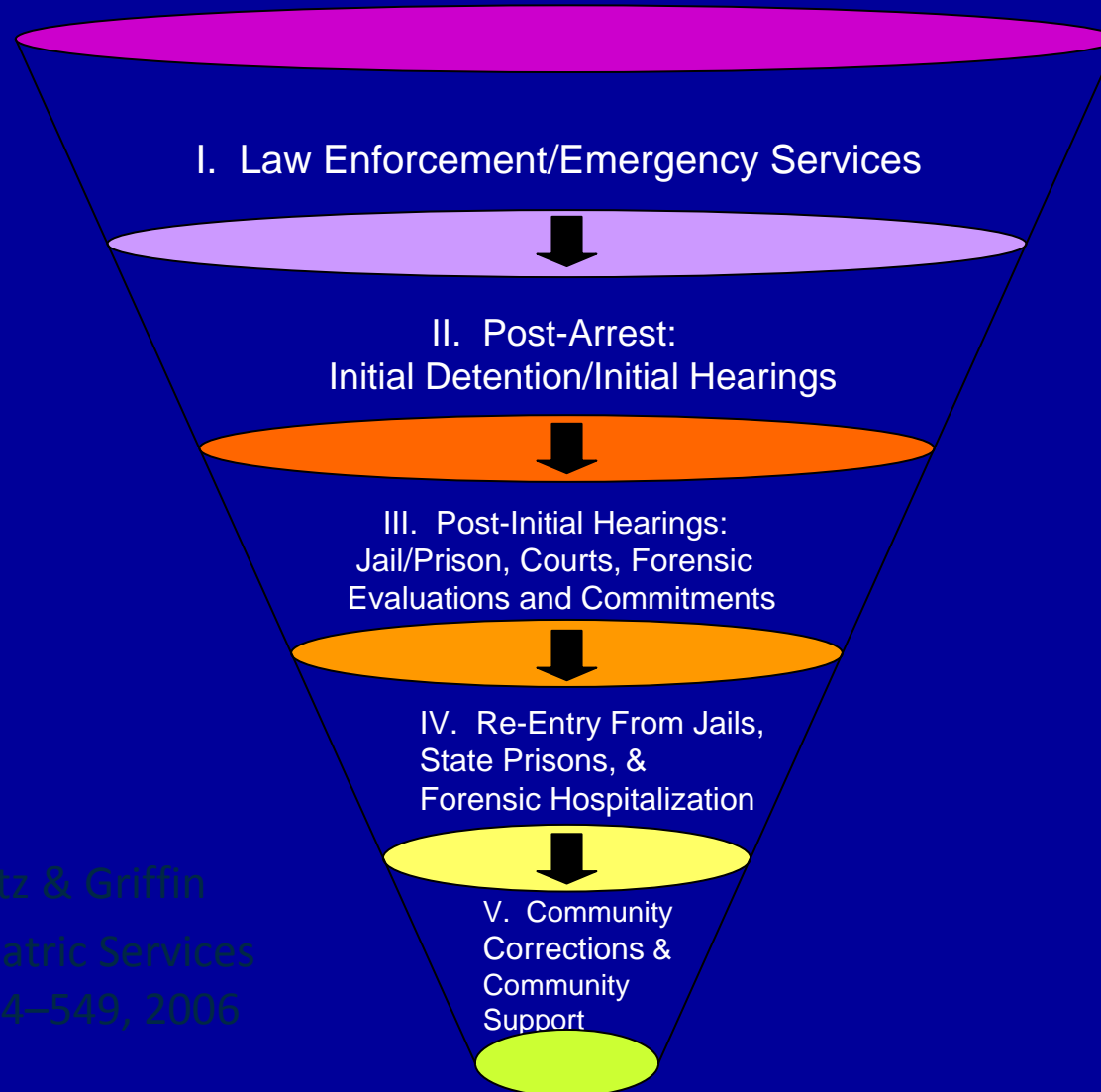
- **A continuum of diversion services will keep many people out of the criminal justice system.**
- **Not everyone can be diverted; those incarcerated need access to timely, effective and ongoing treatment.**
- **People should not be involved in the criminal justice system longer because they have a mental illness.**
- **Cross-system and cross-discipline collaboration are essential.**

Tools for Such Diversion

- **Services**
 - Sequential Intercept Model and Systems Mapping
 - Website
 - Technical assistance
- **National organizations**
 - GAINS Center
 - Council for State Governments
- **State-level Centers of Excellence**
 - Ohio
 - Florida
 - Pennsylvania

Sequential Intercepts

Best Clinical Practices: The Ultimate Intercept

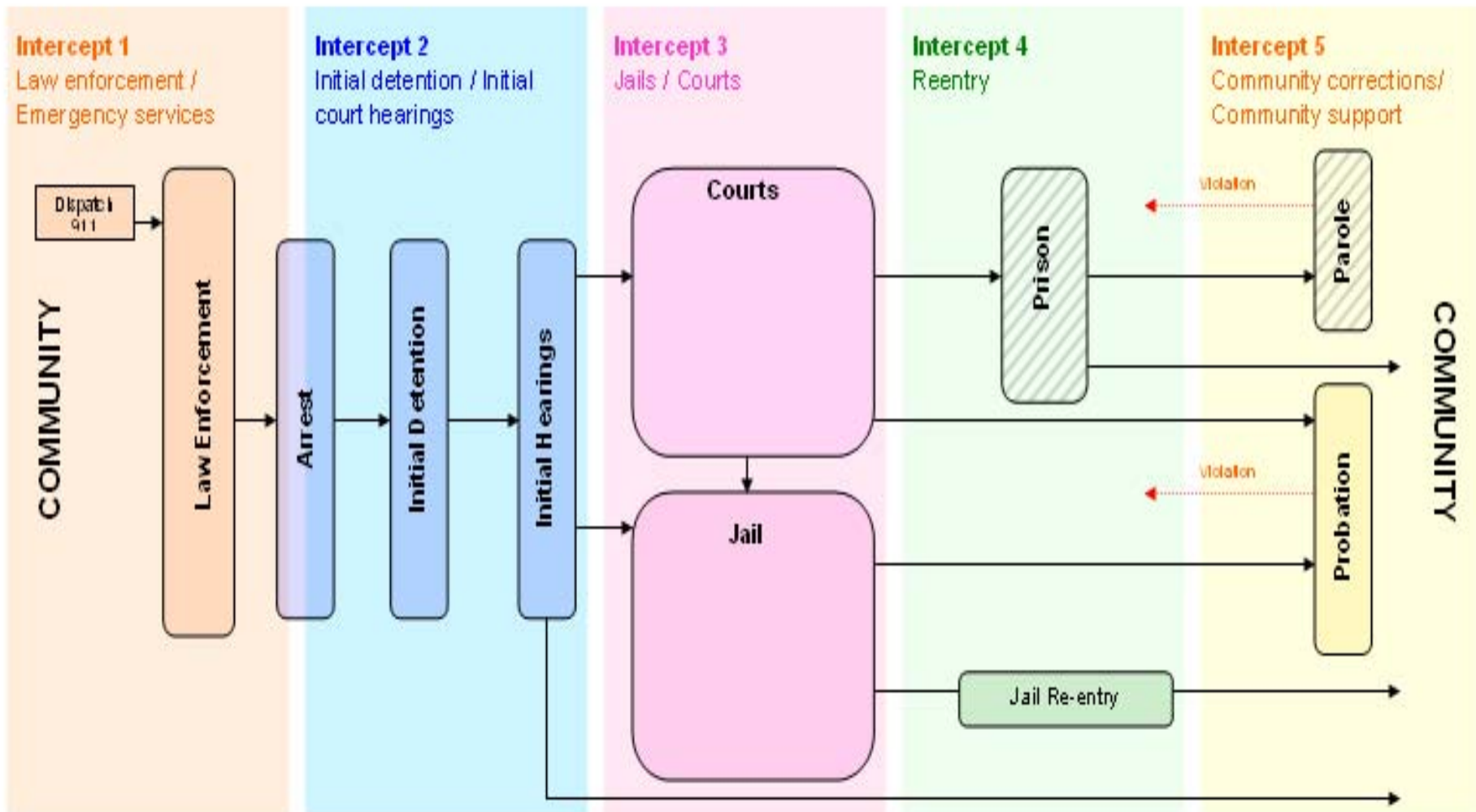


Munetz & Griffin
Psychiatric Services
57: 544–549, 2006

Five Key Points of Interception

1. Booking / Initial court hearings
2. Law enforcement / Emergency services
3. Jails / Courts
4. Re-entry
5. Community corrections / Community support

Sequential Intercepts for Change: Criminal Justice - Mental Health Partnerships



Cross-Systems Mapping: Creating a Local Map

- **Examine the process in a specific locality to identify ways to “intercept” persons with severe mental illness and co-occurring disorders to ensure:**
 - **Prompt access to treatment**
 - **Opportunities for diversion**
 - **Timely movement through criminal justice system**
 - **Linkage to community resources**

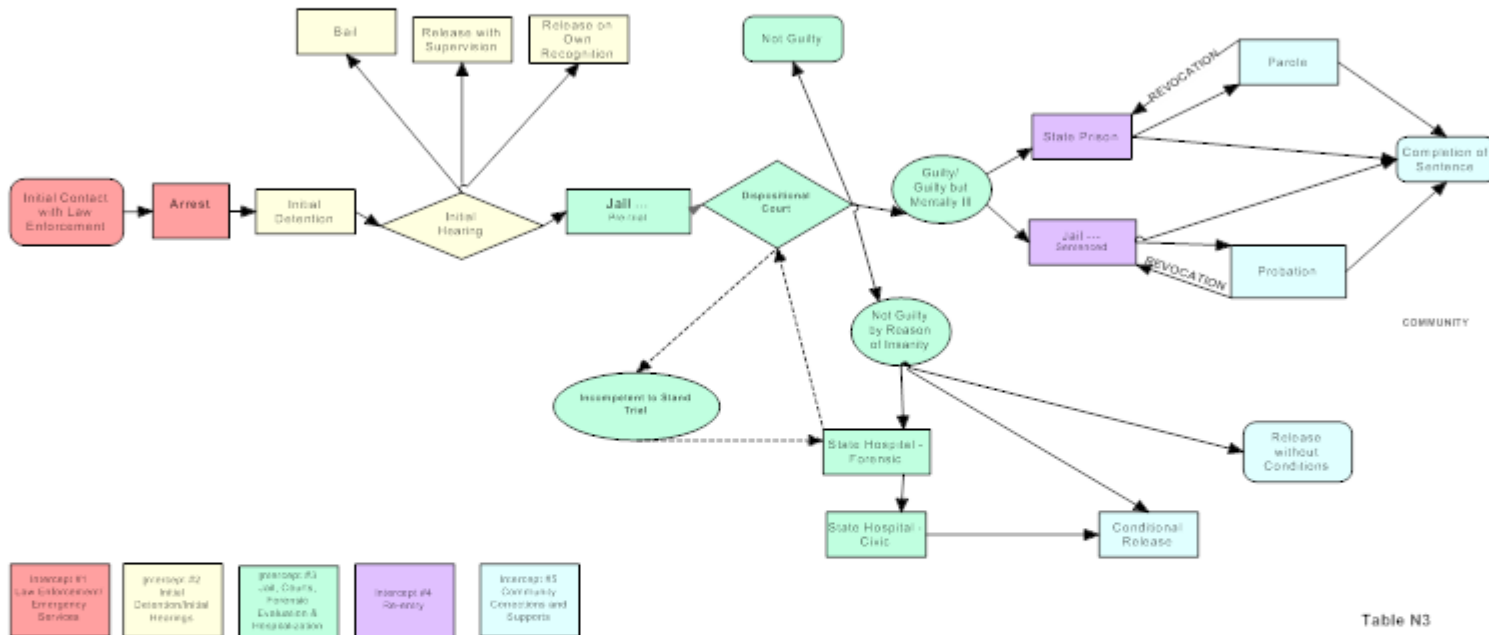


Table N3

Interventions currently occurring within Montgomery County according to Intercept stage:

Intercept 1:

- MCES Police Training School
- “911” can connect calls directly to mental health crisis support
- Mobile Crisis Support
- Rapid Access to emergency inpatient
- “Cop Cards”

Intercept 2:

- Mental Health Manual for judges, public defenders and prosecutors
- Forensic Liaisons act as boundary spanners and can assist with:
 - o Providing expert witness in court
 - o Assist judges in pre-sentence planning

Intercept 3:

- Weekly electronic data sharing
- Identification of individuals with current mental health supports
- Rapid assessment at admission
- Shared and integrated funding arrangements
- Forensic Liaison

Intercept 4:

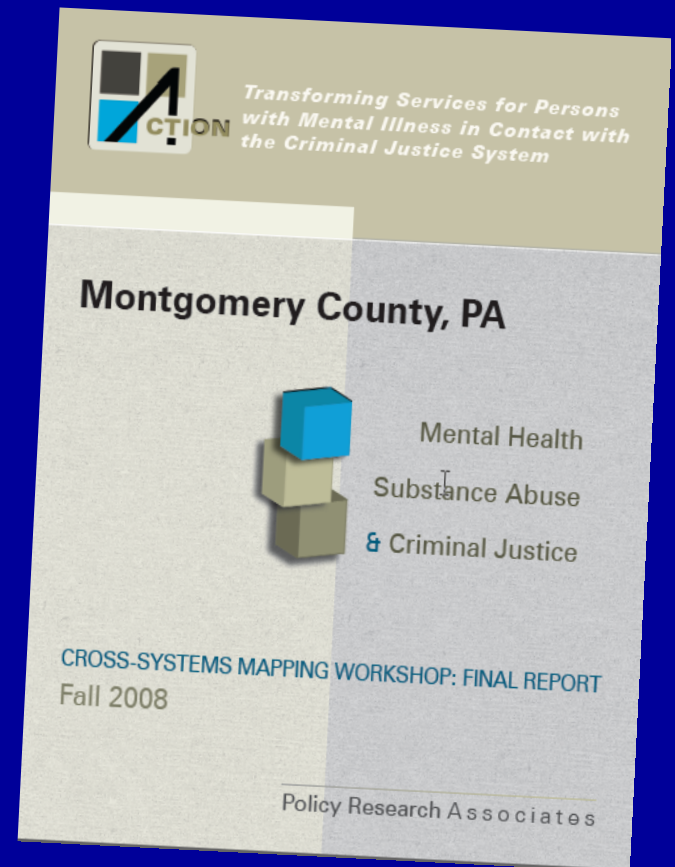
- Weekly electronic data sharing
- Shared and integrated funding arrangements
- Rapid assessment at admission
- Forensic team meets monthly to assess, plan and coordinate community resources
- Forensic Liaison

Intercept 5:

- Full array of community mental health services and supports
- Critical Time Intervention Team (CTI)
- Intensive probation units

Final Report

- First cross-systems picture
- Wide distribution
- Planning reference
- Support for future funding applications
- Reference/resource materials included
- Priorities addressed over time
- Developmental tool
- Outcome measurement tool



Sequential Intercept Model Provides:

- **Common language across criminal justice, behavioral health, and other systems**
- **Big picture look at the intersection of systems**
- **Ability to analyze details while retaining larger**

National Organizations



National

The Center for Mental Health Services'

GAINS

Center



United States Department of Health and Human Services, Substance Abuse and Mental Health Services Administration

- Operated since 1995 as a national locus for the collection and dissemination of information about effective mental health and substance abuse services for people with co-occurring disorders in contact with the justice system
- Primary focus on expanding access to community based services at all points of contact with the justice system

G – gathering information

A – assessing what works

I -- interpreting/integrating the facts

N – networking

S – stimulating change



National

The Center for Mental Health Services'

GAINS

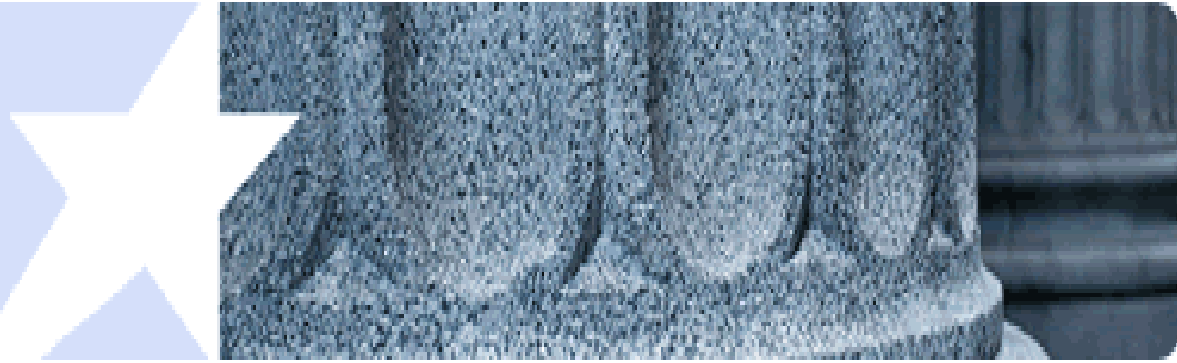
Center



United States Department of Health and Human Services, Substance Abuse and Mental Health Services Administration

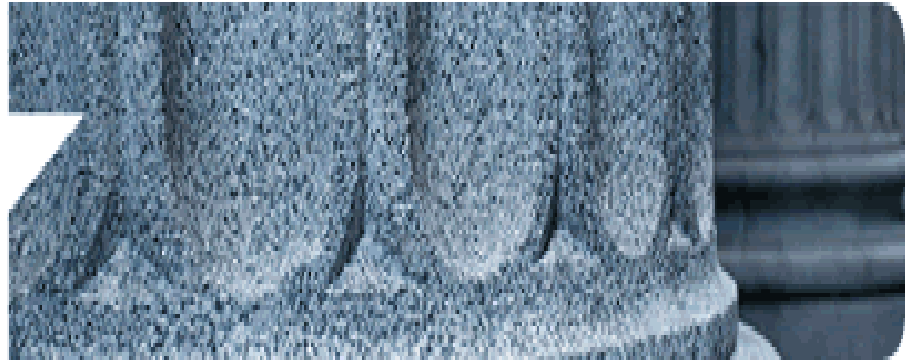
Major Activities to Achieve Purposes:

- Policy-relevant research
- Consultation
- Continuing education
- Dissemination of information
 - National Conference
 - Website
 - Publications
- Technical Assistance
- National Leadership Forum
- Coordinating center for SAMHSA jail diversion grants
- Justice Leadership Initiative
- Veterans and Justice
- TAPA Center for Jail Diversion
- Center for Evidence-Based Programs in the Justice System



Major Purposes:

- **National nonprofit that serves policymakers at local, state, and federal levels**
- **Provides practical, nonpartisan advice and consensus-driven strategies informed by available evidence, to increase public safety and strengthen communities**



Major Activities to Achieve Purposes:

- **Technical assistance to justice and mental health collaborators**
- **Provides “learning sites” making significant progress on complex CJ problems (mental health courts, corrections/mental health)**
- **Web-based learning**
- **Criminal Justice/Mental Health Consensus Project**
- **Reentry Policy Council**
- **Publications (briefs, how-to guides, and issue overviews) and presentations by national experts in mental health, reentry, justice reinvestment**

Pennsylvania

Mental Health & Justice
Center of Excellence

**Reducing Justice Involvement
For People with Mental Illness**

Technical Assistance Goals

- **Specialized searches of resources**
- **Educational sessions for multiple locales**
- **Hands-on assistance to individual locales**
 - **Data collection and management**
 - **Data analysis assistance**
 - **Consultation regarding reporting**
- **Fostering peer-to-peer networks, state-wide, and nationally**

Reducing Justice Involvement For People with Mental Illness.

Home Data Resources Documents Videos Resources Services & Training Funding Opps. Trainers Corner Contact Us



The Pennsylvania Mental Health and Justice Center of Excellence is a collaborative effort of Drexel University and the University of Pittsburgh. It is funded by the Pennsylvania Commission on Crime & Delinquency and the Pennsylvania Office of Mental Health and Substance Abuse Services. The purpose of the Center is to work with Pennsylvania communities to identify points of interception at which an intervention can be made to prevent individuals with mental illness from entering or penetrating deeper into the criminal justice system. The Center will work collaboratively with the Commonwealth and locales in planning and implementing programs, providing information to promote their use of evidence-based practices and serve as a resource for technical assistance and training. The Center will also host a central repository for collected data and information on criminal justice/mental health responses throughout the Commonwealth of Pennsylvania.

[Click here](#) to view the official announcement from PCCD and OMHSAS regarding the creation of the Center of Excellence

News and Information

- [Upcoming Conferences from April through August 2010](#)
- View the video, [Voices of Jericho: Stories of Jail Diversion](#)
- The PA Mental Health and Justice Center of Excellence held the first "Train the Trainer" seminar in mid-January. Fourteen enthusiastic individuals participated and will work with the Center of Excellence team in conducting cross-systems mappings across the Commonwealth of PA.

Up-To-Date County and Program Information



Feedback

- We would like your feedback about our site. [Click here](#) to send us your feedback and we will post it to our Bulletin Board.
- What has everyone been saying about the PA Center of Excellence? [Click here](#) to view our Bulletin Board.



OHIO CRIMINAL JUSTICE
COORDINATING CENTER
OF EXCELLENCE

Promoting Jail Diversion Alternatives for People with Mental Disorders

CCOE

- **Established in 2001 with a grant from Ohio DMH to Summit County**
- **ADM Board contracts with Northeastern Ohio University to run Center of Excellence**
- **CoE assists counties develop diversion programs for those with MH disorders**



OHIO CRIMINAL JUSTICE
COORDINATING CENTER
OF EXCELLENCE

Promoting Jail Diversion Alternatives for People with Mental Disorders

CCOE

- Encourages alliances between mental health and criminal justice systems
- Promotes Sequential Intercept Model to divert people with MH disorders from unnecessary arrest and incarceration
- CoE website provides information on jail diversion in Ohio, summarizes relevant research, and provides links to state and national organizations

- **Located within the Florida Mental Health Institute at USF**
- **Funded by Florida Dept. of Children and Families and private foundation**
- **Provides technical assistance to counties preparing grant applications**
- **Assists counties evaluate the effects of interventions on detention facilities**

- **Assist counties monitor effects of grants on county's criminal justice systems**
- **Disseminates best practices**
- **Coordinates & assists state interagency work groups**
- **Website provides document library, video archive, web resources, and service/training information**

Forthcoming Book on Diversion and the Sequential Intercept Model

Griffin, P., Heilbrun, K., Mulvey, E., DeMatteo, D., & Schubert, C. (under contract, publication anticipated 2012). *Criminal justice, mental illness, and the Sequential Intercept Model: Promoting community alternatives*. New York: Oxford University Press.